

LANDA®



LOWER PRICES
SELECT HOT WATER SKIDS



EQUIPMENT
DETERGENTS
BRANDED PARTS
& ACCESSORIES

2025 PRICE LIST

EFFECTIVE JANUARY 1, 2025

TABLE OF CONTENTS

HOT WATER PRESSURE WASHERS	3
Electric Power	6
Gas/Diesel Power	12
PRESSURE WASHER TRAILERS	18
COLD WATER PRESSURE WASHERS	21
Battery Power	24
Gas/Diesel Power	25
Electric Power	33
HOT WATER GENERATORS	38
WATER RECOVERY	40
ANCILLARY	41
SPECIAL EQUIPMENT	43
DETERGENTS	48
Magnificent 7	49
General Purpose	50
Transportation	51
Degreasers	54
Acidic Cleaners	58
Automatic Parts Washers	59
Building Care	60
Disinfectants & Sanitizers	65
Hard Surface Cleaners	66
Pressure Washer Maintenance	67
Detergent Accessories	68
PARTS & ACCESSORIES	69
Surface Cleaners	70
Guns & Lances	71
Hoses	72
Hose Reels	73
Pumps	75
Pump Repair Kits	77
Replacement Parts	79
Coils & Accessories	81
Burners	83



**LANDA[®] HOT WATER
PRESSURE WASHERS**

HOT WATER

COMPARISON CHART



SERIES / FEATURES	HOT	PHW	MHC	VHP
Power Type	Electric	Electric	Gasoline	Electric
Max. GPM / PSI	3.5 / 2,000	4.8 / 3,000	3.5 / 3,400	2.5 / 2,000
Landa 5000 PSI Trigger Gun				
3 Hardened SS Nozzles (15°, 25°, 40°)	■	■	■	15° only
Durable Variable Pressure Wand	■	■	■	■
2-Wire Landa Hose Rated for 6000 PSI	□	□	■	□
Heating Source	Diesel	Diesel	Diesel	LP
Diesel tank capacity (gal)	5-6	10	10	
Diesel Burner Voltage	120V - 230V AC	120V - 230V AC	12V DC	
Adjustable Thermostat	■	■	■	
LP Gas Conversion				■
Pump Drive	Direct or Belt	Belt	Direct or Belt	Belt
Triplex Landa Pump with 7 year warranty	■	■	■	■
AC Voltmeter				
Auto Start/Stop		□		
Caster Wheel Kit	□	□	□	
Cool-Bypass (Patent US 8,496,188 B2)		■		
Downstream Detergent Injector	■	□	■	■
Electrical Generator				
Electronic Ignition (no standing pilot light)				□
Fuel Cap and Gauge	■	■		
Ground Fault Circuit Interrupter (1-phase only)	■	■		■
High-Pressure Detergent Injection	□	■		
Hour Meter	□	■	■	
Wireless Remote		□		
Magnetic Start Switch		■		
Oil/Water Separator in Fuel Line	□	■	□	
Polyethylene Float Tank	□	■	□	
Stainless Steel Coil Wrap	■*	■	■	
Time Delay Shutdown		□		
Tru-Tite System				
Tru-Trac Technology		■		
Vibration Isolated Platform				
Wet-Steam Combination	□	□		

■ Standard Feature □ Available Feature *Applies to specific models within series **Standard for gas models, optional diesel



PGDC	PGHW	PDHW	SLT	SLX	VHG	EHW
Gasoline	Gasoline	Diesel	Gas or Diesel	Gas or Diesel	Electric	Electric
8.0 / 3,500	8.0 / 5,000	4.7 / 3,500	8.0 / 3,200	9.5 / 2,800	8.0 / 3,500	4.2 / 3,000
■ *	■ *	■	■ *	■	■ *	
■	■	■	■	■	■	■
■	■	■	■	■	■	■
■	■	■	■	■	■	■
Diesel	Diesel	Diesel	Diesel	Diesel	NG or LP	Electric
9.25	10	22	15-26-30-40	15-26-30-40		
12V DC	120V AC	12V DC - 120V AC	120V AC	120V AC		
■	■	■	■	■	■	
					□	
Belt	Belt	Belt	Belt	Belt	Belt	Belt
■	■	■	■	■	■	■
	■ *		■	■		
					■	
	■				■	
■		□			□	■
	■	■ *	■	■		
					■	
□	■	□	■ **	■ **	■	
	■	■	■	■		
					□	□
					■	■
□	■	■	■	■		
□	■	□	□	□	■	
■	■	■	■	■		
					□	■
■	■	■	■	■		
	□	□	□	□		

■ Standard Feature □ Available Feature * Applies to specific models within series ** Standard for gas models, optional diesel



PHW

PORTABLE ELECTRIC

KEY SPECS

- Electric Power
- Diesel/Oil Heat
- Belt Drive Pump
- 4.8 Max. GPM
- 3000 Max. PSI
- 52"L x 32"W x 38"H

VALUE & OPTIONS

- ETL® Certified
- 7-Year Pump Warranty
- 5-Year Heating Coil Warranty
- Optional Auto Start/Stop
- Optional Wireless Remote

MODEL NO.	ORDER NO.	GPM	PSI	PUMP	PUMP RPM	MOTOR HP	VOLTS	PHASE	AMPS	SHIP WT (LBS)	LIST PRICE
PHW3-11024D	1.109-078.0	2.8	1000	LBP3030R	1725	2.0	120	1	20	590	\$7,640
PHW4-22024A	1.109-079.0	4.0	2200	LT6036R.2	1025	6.2	230	1	29	625	\$9,810
PHW4-22024B	1.109-080.0	4.0	2200	LT6036R.2	1025	6.2	230	3	19	610	\$9,950
PHW4-22024C	1.109-081.0	4.0	2200	LT6036R.2	1025	6.2	460	3	11	615	\$9,950
PHW4-22024F	1.109-082.0	3.5	2200	LT6036R.2	940	5.0	575	3	10	615	\$9,975
PHW4-22024G	1.109-083.0	4.0	2200	LT6036R.2	1025	6.2	208	1	31	625	\$9,975
PHW4-22024H	1.109-084.0	4.0	2200	LT6036R.2	1025	6.2	208	3	21	610	\$9,975
PHW4-30024A	1.109-085.0	3.9	3000	LT6036R.2	975	8.2	230	1	38	640	\$11,360
PHW4-30024B	1.109-086.0	3.9	3000	LT6036R.2	975	8.2	230	3	24	625	\$11,490
PHW4-30024C	1.109-087.0	3.9	3000	LT6036R.2	975	8.2	460	3	12	635	\$11,490
PHW4-30024F	1.109-088.0	3.5	3000	LT6036R.2	975	7.5	575	3	12	635	\$11,480
PHW4-30024G	1.109-089.0	3.9	3000	LT6036R.2	975	8.2	208	1	40	640	\$11,650
PHW4-30024H	1.109-090.0	3.9	3000	LT6036R.2	975	8.2	208	3	26	625	\$11,650
PHW5-30024B	1.109-091.0	4.8	3000	LT6036R.2	1500	10.0	230	3	30	625	\$12,350
PHW5-30024C	1.109-092.0	4.8	3000	LT6036R.2	1500	10.0	460	3	16	635	\$12,350

OPTIONS & ACCESSORIES		LIST PRICE
8.917-509.0	LanCom Wireless Remote Control Kit	\$2,505.00
8.725-709.0	Additional LanCom Remote	\$523.00
8.917-817.0	LanCom Wall Mount Bracket	\$226.00
8.917-507.0	Snap-N-Go Auto Start/Stop Kit	\$322.00
8.917-508.0	Snap-N-Go Time Delay Kit	\$223.00
8.750-487.0	Pivot Hose Reel (100' capacity, reel only)	\$497.00
8.917-798.0	Wheel Kit (2 casters)	\$280.00
8.758-460.0	13" Flat-Free Tire (qty 1)	\$43.70
8.917-683.0	Steam Combo Kit	\$316.00
8.917-714.0	Lifting Bracket/Hose Reel Platform Only	\$190.00
8.917-713.0	Lifting Bracket/Hose Reel Platform with E-Zee Reel & Plumbing (holds 100' of 3/8" hose, not included)	\$439.00
8.750-477.0	Non-Pivot Hose Reel (100' capacity, reel only)	\$386.00



HOT

PORTABLE ELECTRIC

KEY SPECS

- Electric Power
- Diesel/Oil Heat
- Belt or Direct Drive Pump
- Heavy-Duty WEG Motor
- Sliding Power Platform
- 3.5 Max. GPM
- 2000 Max. PSI
- 52"L x 27"W x 33"H

VALUE & OPTIONS

- ETL® Certified
- 7-Year Pump Warranty (2HOT4)
- 5-Year Pump Warranty (2HOT2)
- 5-Year Heating Coil Warranty

MODEL NO.	ORDER NO.	GPM	PSI	DRIVE	PUMP	PUMP RPM	MOTOR HP	VOLTS	PHASE	AMPS	SHIP WT (LBS)	LIST PRICE
2HOT2-15024D	1.109-177.0	1.9	1500	Direct	LH2126S	1725	2	120	1	20	558	\$5,285
2HOT4-20024A	1.109-178.0	3.5	2000	Belt	LM3840R.3	1560	5	230	1	25	635	\$7,520
2HOT4-20024G	1.109-179.0	3.5	2000	Belt	LM3840R.3	1560	5	208	1	31	635	\$8,010

OPTIONS & ACCESSORIES		LIST PRICE
8.750-487.0	Pivot Hose Reel (100' capacity, reel only)	\$497.00
8.750-477.0	Non-Pivot Hose Reel (100' capacity, reel only)	\$386.00
8.917-541.0	Hose Reel Platform with E-Zee Reel & Plumbing (holds 100' of 3/8" hose, not included)*	\$347.00
8.917-522.0	Hose Reel Platform Only (should not be used as a lifting rack)	\$151.00
8.931-584.0	Assembly Float Tank Kit	\$472.00
8.931-592.0	Support Rotary Hose Reel Kit (hose reel not included)	\$120.00
8.917-525.0	Wheel Kit (2 Casters)	\$270.00

*Should not be used as a lifting rack



Shown with optional hose reel

VHG

COMPACT STATIONARY ELECTRIC

KEY SPECS

- Electric Power
- Natural Gas or Liquid Propane Heat
- Belt Drive Pump
- Programmable Smart Control
- 5.0 Max. GPM
- 3000 Max. PSI
- 20.6" L x 51.875" W x 51.46" H

VALUE & OPTIONS

- ETL® Certified
- 7-Year Pump Warranty
- 5-Year Heating Coil Warranty
- Optional Wireless Remote, Auto Start/Stop and Time Delay Shutdown
- Stainless Steel Upgrades

MODEL NO.	ORDER NO.	HEAT	GPM	PSI	PUMP	PUMP RPM	MOTOR HP	VOLTS	PHASE	AMPS	APPROX. BTU	SHIP WT (LBS)	LIST PRICE
VHG4-2200G	1.109-223.0	NG	4.0	2200	LT6036R	1037	6.2	208	1	29	390,000	736	\$11,150
VHG4-2200G	1.109-224.0	LP	4.0	2200	LT6036R	1037	6.2	208	1	29	378,617	736	\$11,150
VHG4-2200H	1.109-225.0	NG	4.0	2200	LT6036R	1037	6.2	208	3	18	390,000	703	\$11,150
VHG4-2200H	1.109-226.0	LP	4.0	2200	LT6036R	1037	6.2	208	3	18	378,617	703	\$11,150
VHG4-2200A	1.109-227.0	NG	4.0	2200	LT6036R	1037	6.2	230	1	27	390,000	730	\$11,250
VHG4-2200A	1.109-228.0	LP	4.0	2200	LT6036R	1037	6.2	230	1	27	378,617	730	\$11,250
VHG4-2200B	1.109-229.0	NG	4.0	2200	LT6036R	1031	6.2	230	3	16	390,000	703	\$11,250
VHG4-2200B	1.109-230.0	LP	4.0	2200	LT6036R	1031	6.2	230	3	16	378,617	703	\$11,250
VHG4-2200C	1.109-231.0	NG	4.0	2200	LT6036R	1031	6.2	460	3	7	390,000	703	\$11,400
VHG4-2200C	1.109-232.0	LP	4.0	2200	LT6036R	1031	6.2	460	3	7	378,617	703	\$11,400
VHG4-3000G	1.109-233.0	NG	4.0	3000	LT6036R	1011	8.2	208	1	38	390,000	740	\$12,150
VHG4-3000G	1.109-234.0	LP	4.0	3000	LT6036R	1011	8.2	208	1	38	378,617	740	\$12,150
VHG4-3000H	1.109-235.0	NG	4.0	3000	LT6036R	1011	8.2	208	3	27	390,000	735	\$12,150
VHG4-3000H	1.109-236.0	LP	4.0	3000	LT6036R	1011	8.2	208	3	27	378,617	735	\$12,150
VHG4-3000A	1.109-237.0	NG	4.0	3000	LT6036R	994	8.2	230	1	36	390,000	759	\$12,150
VHG4-3000A	1.109-238.0	LP	4.0	3000	LT6036R	994	8.2	230	1	36	378,617	759	\$12,150
VHG4-3000B	1.109-239.0	NG	4.0	3000	LT6036R	1011	8.2	230	3	25	390,000	735	\$12,150
VHG4-3000B	1.109-240.0	LP	4.0	3000	LT6036R	1011	8.2	230	3	25	378,617	735	\$12,150
VHG4-3000C	1.109-241.0	NG	4.0	3000	LT6036R	1011	8.2	460	3	15	390,000	735	\$12,400
VHG4-3000C	1.109-242.0	LP	4.0	3000	LT6036R	1011	8.2	460	3	15	378,617	735	\$12,400
VHG5-3000H	1.109-243.0	NG	5.0	3000	LT6036R	1224	10	208	3	33	390,000	743	\$13,500
VHG5-3000H	1.109-244.0	LP	5.0	3000	LT6036R	1224	10	208	3	33	378,617	743	\$13,500
VHG5-3000B	1.109-245.0	NG	5.0	3000	LT6036R	1224	10	230	3	29	390,000	744	\$13,500
VHG5-3000B	1.109-246.0	LP	5.0	3000	LT6036R	1224	10	230	3	29	378,617	744	\$13,500
VHG5-3000C	1.109-247.0	NG	5.0	3000	LT6036R	1224	10	460	3	14	390,000	744	\$13,500
VHG5-3000C	1.109-248.0	LP	5.0	3000	LT6036R	1224	10	460	3	14	378,617	744	\$13,500

OPTIONS & ACCESSORIES

OPTION NO.	DESCRIPTION	LIST PRICE
8.924-815.0	Remote Control Kit, Operator Station	\$553.00
8.933-422.0	Remote Control Kit, 1 Remote + 1 Receiver	\$766.00
8.760-298.0	Remote Control, Replacement Remote	\$1,045.00
8.924-878.0	Kit, Wall Mount, Wireless Remote	\$85.00
9.802-633.0	Regulator, L.P. Assembly	\$436.00
8.933-404.0	Accessory Kit Water Inlet	\$280.00
8.933-405.0	Accessory Kit Drip Pan	\$316.00
8.933-406.0	100' Drop-In Hose Reel for VHG4/5	\$1,220.00
8.717-728.0	Draft Diverter, 8" for VHG4/5	\$185.00
8.933-320.0	Accessory Kit Float Tank Lid	\$64.74
8.933-876.0	Gas Valve Extension Kit	\$110.00
8.933-322.0	Stainless Steel Frame and Door Panels*	\$2,985.00
8.933-323.0	Stainless Steel Door Panels Only*	\$1,485.00

*Factory installed



Shown with optional hose reel

VHG NEW

LARGE STATIONARY ELECTRIC

KEY SPECS

- Electric Power
- Natural Gas or Liquid Propane Heat
- Belt Drive Pump
- Programmable Smart Control
- 8.0 Max. GPM
- 3500 Max. PSI
- 31.94"L x 68.8"W x 62.56"H

VALUE & OPTIONS

- 7-Year Pump Warranty
- 5-Year Heating Coil Warranty
- Optional Wireless Remote
- Optional Auto Start/Stop
- Optional Time Delay Shutdown
- Stainless Steel Upgrades Available thru Specials Department

MODEL NO.	ORDER NO.	HEAT	GPM	PSI	PUMP	PUMP RPM	MOTOR HP	VOLTS	PHASE	AMPS	APPROX. BTU	SHIP WT (LBS)	LIST PRICE
VHG6-3500H	1.109-253.0	NG	6.0	3500	LX9536R.2	1177	20	208	3	58	602,771	1650	\$17,495
VHG6-3500H	1.109-254.0	LP	6.0	3500	LX9536R.2	1177	20	208	3	58	597,039	1650	\$17,495
VHG6-3500B	1.109-255.0	NG	6.0	3500	LX9536R.2	1177	20	230	3	51	602,771	1650	\$17,495
VHG6-3500B	1.109-256.0	LP	6.0	3500	LX9536R.2	1177	20	230	3	51	597,039	1650	\$17,495
VHG6-3500C	1.109-257.0	NG	6.0	3500	LX9536R.2	1177	20	460	3	26	602,771	1650	\$17,495
VHG6-3500C	1.109-258.0	LP	6.0	3500	LX9536R.2	1177	20	460	3	26	597,039	1650	\$17,495
VHG8-3500H	1.109-259.0	NG	8.0	3500	LX9536R.2	1647	20	208	3	58	1,015,194	1660	\$19,495
VHG8-3500H	1.109-260.0	LP	8.0	3500	LX9536R.2	1647	20	208	3	58	885,023	1660	\$19,495
VHG8-3500B	1.109-261.0	NG	8.0	3500	LX9536R.2	1647	20	230	3	51	1,015,194	1660	\$19,495
VHG8-3500B	1.109-262.0	LP	8.0	3500	LX9536R.2	1647	20	230	3	51	885,023	1660	\$19,495
VHG8-3500C	1.109-263.0	NG	8.0	3500	LX9536R.2	1647	20	460	3	26	1,015,194	1660	\$19,495
VHG8-3500C	1.109-264.0	LP	8.0	3500	LX9536R.2	1647	20	460	3	26	885,023	1660	\$19,495

OPTIONS & ACCESSORIES			LIST PRICE
8.924-815.0	Remote Control Kit, Operator Station		\$553.00
8.933-422.0	Remote Control Kit, 1 Remote + 1 Receiver		\$766.00
8.760-298.0	Remote Control, Replacement Remote		\$1,045.00
8.924-878.0	Kit, Wall Mount, Wireless Remote		\$85.00
9.802-633.0	Regulator, L.P. Assembly		\$436.00
8.933-404.0	Accessory Kit Water Inlet		\$280.00
8.933-405.0	Accessory Kit Drip Pan		\$316.00
8.933-827.0	100' Drop-In Hose Reel for VHG6/8		\$1,610.00
8.717-730.0	Draft Diverter, 12" for VHG6/8		\$309.00
8.933-320.0	Accessory Kit Float Tank Lid		\$64.74

i For stainless steel options and higher GPM specifications, please request a quote through the Landa Specials Department.



VHP

PORTABLE ELECTRIC

KEY SPECS

- Electric Power
- Liquid Propane Heat
- Belt Drive Pump
- 2.5 Max. GPM
- 2000 Max. PSI
- 50"L x 26"W x 41"H

VALUE & OPTIONS

- ETL® Certified
- 7-Year Pump Warranty
- 5-Year Heating Coil Warranty
- Optional Electric Ignition



MODEL NO.	ORDER NO.	GPM	PSI	PUMP	PUMP RPM	MOTOR HP	VOLTS	PHASE	AMPS	APPROX BTU	SHIP WT (LBS)	LIST PRICE
VHP2-15024D	1.109-556.0	1.8	1500	LBP3030R	1100	2	120	1	17	140,000	470	\$7,835
VHP3-20024A	1.109-557.0	2.5	2000	LBP3030R	1375	5	230	1	20	245,000	500	\$8,575

OPTIONS & ACCESSORIES		LIST PRICE
8.903-538.0	Stainless Steel Motor Cover	\$694.00
8.903-501.0	Electric Ignition (convenience in lighting pilot) for 120V machine	\$898.00
8.925-856.0	Electric Ignition (convenience in lighting pilot) for 230V machine	\$889.00



EHW

STATIONARY ALL-ELECTRIC

KEY SPECS

- Electric Power
- Electric Heat
- Belt Drive Pump
- Time Delay Shutdown
- 4.2 Max. GPM
- 3000 Max. PSI
- 34"L x 25"W x 52"H

VALUE & OPTIONS

- ETL® Certified
- 7-Year Pump Warranty
- 5-Year Heating Coil Warranty
- Optional Wireless Remote

MODEL NO.	ORDER NO.	GPM	PSI	PUMP	PUMP RPM	MOTOR HP	VOLTS	PHASE	AMPS	KW	SHIP WT (LBS)	LIST PRICE
EHW4-20024C	1.109-500.0	4.2	2000	LT6036R.2	1015	6.2	460	3	55	40.5	620	\$14,820
EHW4-30024C	1.109-501.0	3.5	3000	LT6036R.2	845	7.5	460	3	59	40.5	640	\$15,530
EHW4-20024F	1.109-954.0	3.5	2000	LT6036R.2	845	5.0	575	3	46	40.5	620	\$14,820
EHW4-30024F	1.109-955.0	3.5	3000	LT6036R.2	845	7.5	575	3	49	40.5	640	\$16,050

OPTIONS & ACCESSORIES		LIST PRICE
8.930-163.0	LanCom Wireless Remote Control System, 1-Step Detergent* ♦	\$1,400.00
8.930-177.0	LanCom Wireless Remote Control System, 2-Step Detergent* ♦	\$1,770.00
8.930-358.0	Additional LanCom Remote ♦	\$696.00

*Factory installed ♦ For 460V units only



MHC



PORTABLE GAS

KEY SPECS

- Gas Power
- Diesel/Oil Heat
- Belt or Direct Drive Pump
- Engine-Regulator Combo
- 12V DC Burner
- 10 Gallon Fuel Tank
- 3.5 Max. GPM
- 3500 Max. PSI
- 52"L x 29"W x 45"H

VALUE & OPTIONS

- ETL® Certified
- 7-Year Pump Warranty
- 5-Year Heating Coil Warranty
- Optional Float Tank, Caster Wheel Kit, Trailer Mounting Kit

MODEL NO.	ORDER NO.	GPM	PSI	DRIVE	PUMP	PUMP RPM	ENGINE	CC	SHIP WT (LBS)	LIST PRICE
MHC3-24324	1.110-087.0	2.7	2400	Direct	LH2926G	3400	Honda GX200	196	560	\$8,180
MHC4-30324E/S	1.110-041.0	3.5	3000	Direct	LS3540GR.3	3400	Honda GX390	389	600	\$10,390
MHC4-35324E	1.110-042.0	3.5	3500	Direct	LS3540GR.3	3400	Honda GX390	389	600	\$10,390
MHC4-35224E	1.110-084.0	3.5	3500	Direct	LS3540GR.3	3400	Vanguard 400	408	600	\$10,390
MHC4-35324E/B	1.110-077.0	3.5	3500	Belt	LM3540L.3	1800	Honda GX390	389	600	\$9,500
MHC4-35224E/B	1.110-081.0	3.5	3500	Belt	LM3540L.3	1800	Vanguard 400	408	600	\$9,000

OPTIONS & ACCESSORIES		LIST PRICE
8.915-496.0	360° Pivot Hose Reel Kit (100' capacity, reel only)	\$644.00
8.750-487.0	Pivot Hose Reel (100' capacity, reel only)	\$497.00
8.750-477.0	Non-Pivot Hose Reel (100' capacity, reel only)	\$386.00
8.917-541.0	Hose Reel Platform with E-Zee Reel & Plumbing (holds 100' of 3/8" hose, not included)*	\$347.00
8.931-592.0	Support, Rotary Hose Reel for MHC w/GX200 engine ♦	\$120.00
8.917-522.0	Hose Reel Platform Only*	\$151.00
8.915-404.0	Wheel Kit (2 front caster wheels)	\$351.00
8.915-406.0	Float Tank & Inlet Detergent Valve	\$618.00
8.931-584.0	Float Tank for MHC w/GX200 engine ♦	\$472.00
8.916-184.0	Lifting Bracket	\$237.00
8.915-494.0	Trailer Mount Kit	\$153.00

*Should not be used as a lifting rack ♦ For use with model MHC3-24324 only

WARNING: Gas engine pressure washers can expose you to chemicals including Lead and Diisononyl Phthalate, which are known to the State of California to cause cancer, birth defects or other reproductive harm. For more information, visit www.P65Warnings.ca.gov.



PGDC



CONVERTIBLE GAS SKID

KEY SPECS

- Gas Power
- Diesel/Oil Heat
- Electric Start Engine
- Belt Drive Pump
- 12VDC Burner
- 5 Gallon Gas Tank
- 10 Gallon Diesel Tank
- 8.0 Max. GPM
- 3500 Max. PSI
- 48"L x 32"W x 44"H

VALUE & OPTIONS

- ETL® Certified
- 7-Year Pump Warranty
- 5-Year Heating Coil Warranty
- Optional Float Tank
- Optional Wheel Kit
- Stainless Steel Upgrades

MODEL NO.	ORDER NO.	GPM	PSI	PUMP	PUMP RPM	ENGINE	CC	SHIP WT (LBS)	LIST PRICE
PGDC5-35924E	1.110-096.0	4.7	3500	LT6036L.2	1185	Kärcher LC2V80F-D	764	653	\$10,940
PGDC8-30924E	1.110-098.0	8.0	3000	LX9536L.2	1460	Kärcher LC2V80F-D	764	760	\$14,610
PGDC4-35324E	1.110-049.0	3.8	3500	LT4540L.2	1185	Honda GX390	389	697	\$10,995
PGDC5-35224E	1.110-050.0	4.7	3500	LT6036L.2	1185	Vanguard 18	570	630	\$11,995
PGDC5-35324E	1.110-051.0	4.7	3500	LT6036L.2	1185	Honda GX630	688	653	\$12,995
PGDC8-30324E	1.110-072.0	8.0	3000	LX9536L.2	1460	Honda GX690	688	760	\$15,995

OPTIONS & ACCESSORIES		LIST PRICE
8.904-525.0	Wheel Kit (4 tires)	\$827.00
8.915-496.0	360° Pivot Hose Reel Kit (100' capacity, reel only)	\$644.00
8.903-522.0	Non-Pivot Hose Reel Mounting Kit (100' capacity, reel only)	\$380.00
9.804-067.0	E-Zee Hose Reel (100' capacity, reel only)	\$179.00
8.916-588.0	Stainless Steel Bottom Wrap*	\$508.00
8.916-606.0	Float Tank with Inlet Detergent Metering Valve*	\$460.00

*Factory installed

WARNING: Gas engine pressure washers can expose you to chemicals including Lead and Diisononyl Phthalate, which are known to the State of California to cause cancer, birth defects or other reproductive harm. For more information, visit www.P65Warnings.ca.gov.



PGHW

CONVERTIBLE GAS SKID

KEY SPECS

- Gas Power
- Diesel/Oil Heat
- Electric Start Engine
- Belt Drive Pump
- 2000 Watt Generator
- High-Efficiency 110V Burner
- 2000 Watt Generator
- 8.0 Max. GPM
- 5000 Max. PSI
- 48"L x 32"W x 44"H *

VALUE & OPTIONS

- ETL® Certified
- 7-Year Pump Warranty
- 5-Year Heating Coil Warranty
- Cool Bypass Technology
- Pre-Drilled Trailer Mounting Brackets
- Optional Wheel Kit
- Stainless Steel Upgrades



MODEL NO.	ORDER NO.	GPM	PSI	PUMP	PUMP RPM	ENGINE	CC	SHIP WT (LBS)	LIST PRICE
PGHW4-30324E	1.110-048.0	3.5	3000	LT4540L.2	1125	Honda GX390	389	725	\$12,995
PGHW5-35924E	1.110-095.0	4.8	3500	LT6036L.2	1375	Karcher LC2V80F-D	764	825	\$12,590
PGHW8-30924E	1.110-097.0	8.0	3000	LX9536L.2	1460	Karcher LC2V80F-D	764	850	\$15,770
PGHW5-50524E*	1.110-512.0	5.0	5000	LX5450L	1585	Kawasaki FD2750D	745	1285	\$21,580
PGHW5-35324E	1.110-045.0	4.7	3500	LT6036L.2	1360	Honda GX630	688	840	\$14,500
PGHW5-30224E	1.110-046.0	4.8	3000	LT6036L.2	1375	Vanguard 18	570	825	\$13,950
PGHW8-30324E	1.110-071.0	8.0	3000	LX9536L.2	1460	Honda GX690	688	850	\$15,500

*PGHW5-50524E dimensions: 48"L x 39"W x 42"H. Not trailer ready.

OPTIONS & ACCESSORIES		LIST PRICE
8.915-496.0	360° Pivot Hose Reel Kit (100' capacity, reel only)	\$644.00
8.903-522.0	Non-Pivot Hose Reel Mounting Kit (100' capacity, reel only)	\$380.00
9.804-067.0	E-Zee Hose Reel (100' capacity, reel only)	\$179.00
8.904-525.0	Wheel Kit (4 tires) ♦	\$827.00
8.916-585.0	Steam Valve Kit	\$203.00
8.916-588.0	Stainless Steel Bottom Wrap *	\$508.00

*Factory installed ♦ Not available for PGHW5-50524E

WARNING: Gas engine pressure washers can expose you to chemicals including Lead and Diisononyl Phthalate, which are known to the State of California to cause cancer, birth defects or other reproductive harm. For more information, visit www.P65Warnings.ca.gov.



Stainless steel shown with options



PDHW

CONVERTIBLE GAS SKID

KEY SPECS

- Gas Power
- Diesel/Oil Heat
- Electric Start Engine
- Belt Drive Pump
- 12V or 120V Burner*
- 2900 Watt Generator*
- 22 Gallon Diesel Fuel Tank
- Stainless or Powder Coated Steel Frame
- 4.7 Max. GPM
- 3500 Max. PSI
- 48"L x 32"W x 44"H

* Select models.

VALUE & OPTIONS

- ETL® Certified
- 7-Year Pump Warranty
- 5-Year Heating Coil Warranty
- Pre-Drilled Trailer Mounting Brackets
- Optional Float Tank
- Optional Wheel Kit
- Optional Reel and Lift/Stack Platform Kits

MODEL NO.	ORDER NO.	GPM	PSI	PUMP	PUMP RPM	ENGINE	CC	BURNER	SHIP WT (LBS)	LIST PRICE
PDHW5-35624E	1.110-060.0	4.7	3500	LT6036L.2	1125	Kubota Z602	599	12V DC	948	\$23,410
PDHW5-35624E/SS*	1.110-061.0	4.7	3500	LT6036L.2	1125	Kubota Z602	599	12V DC	948	\$26,740
PDHW5-35624E/G ♦	1.110-062.0	4.7	3500	LT6036L.2	1125	Kubota Z602	599	120V AC	998	\$24,950
PDHW5-35624E/G/SS*	1.110-063.0	4.7	3500	LT6036L.2	1125	Kubota Z602	599	120V AC	998	\$28,270

*Stainless steel frame ♦ 2,400 watt generator

OPTIONS & ACCESSORIES		LIST PRICE
8.904-525.0	Wheel Kit (4 tires)	\$827.00
8.919-981.0	Float Tank with Inlet Injection Kit	\$475.00
8.756-797.0	Downstream Detergent Injector Kit	\$31.10
8.919-984.0	Lifting Sling Kit	\$1,160.00
8.919-990.0	Lift/Stack Platform Kit	\$812.00
8.920-298.0	Lift/Stack Platform Kit, Stainless Steel	\$1,115.00
8.919-988.0	Emergency Air Shutoff Kit	\$242.00

WARNING: Gas engine pressure washers can expose you to chemicals including Lead and Diisononyl Phthalate, which are known to the State of California to cause cancer, birth defects or other reproductive harm. For more information, visit www.P65Warnings.ca.gov.



SLT



DIESEL / GAS SKID



KEY SPECS

- Diesel or Gas Power
- Diesel/Oil Heat up to 200°F
- Electric Start Engine
- Belt Drive Pump
- 2900 Watt Generator
- High Efficiency Burner
- Fuel/Water Separator
- 8.0 Max. GPM
- 3200 Max. PSI
- 62"L x 32"W x 57"H (Diesel)
- 55"L x 32"W x 51"H (Gas)

VALUE & OPTIONS

- ETL® Certified
- 7-Year Pump Warranty
- 5-Year Heating Coil Warranty
- Multi-User Operation
- Optional Float Tank w/ Inlet Chemical Injection
- Optional Steam Valve

MODEL NO.	ORDER NO.	GPM	PSI	PUMP	PUMP RPM	ENGINE	ENGINE FUEL	TANK (GAL)	CC	SHIP WT (LBS)	LIST PRICE
SLT6-32324E	1.110-520.0	5.9	3200	LT6036L.2	1570	Honda GX630	Gasoline	10	688	1245	\$19,980
SLT8-30324E	1.110-522.0	7.8	3000	LX9536L.2	1470	Honda GX690	Gasoline	10	688	1230	\$21,750
SLT6-32624E	1.110-065.0	6.25	3200	LT6036L.2	1625	Kubota D1105	Diesel	15	1123	1745	\$27,950
SLT8-32624E	1.110-066.0	8.0	3200	LX9536L.2	1450	Kubota D1105	Diesel	15	1123	1811	\$29,900

OPTIONS & ACCESSORIES		LIST PRICE
8.920-751.0	Float Tank w/ Inlet Chemical Injection	\$585.00
8.920-977.0	Steam Valve	\$279.00

WARNING: Gas engine pressure washers can expose you to chemicals including Lead and Diisononyl Phthalate, which are known to the State of California to cause cancer, birth defects or other reproductive harm. For more information, visit www.P65Warnings.ca.gov.



SLX



DIESEL / GAS SKID

KEY SPECS

- Diesel or Gas Power
- Diesel/Oil Heat up to 200°F
- Electric Start Engine
- Belt Drive Pump
- 2900 Watt Generator
- High Efficiency Burner
- Fuel/Water Separator
- 9.5 Max. GPM
- 2800 Max. PSI
- 65"L x 36"W x 61"H (Diesel)
- 65"L x 36"W x 58"H (Gas)

VALUE & OPTIONS

- ETL® Certified
- 7-Year Pump Warranty
- 5-Year Heating Coil Warranty
- Multi-User Operation
- Optional Float Tank w/Inlet Chemical Injection
- Optional Steam Valve

MODEL NO.	ORDER NO.	GPM	PSI	PUMP	PUMP RPM	ENGINE	ENGINE FUEL	TANK (GAL)	CC	SHIP WT (LBS)	LIST PRICE
SLX10-25324E	1.110-525.0	9.5	2500	LX1036L.2	1560	Honda GX690	Gasoline	16	688	2020	\$25,890
SLX10-32624E	1.110-067.0	9.2	2800	LX1036L.2	1640	Kubota D1105	Diesel	30	1123	2120	\$31,980

OPTIONS & ACCESSORIES		LIST PRICE
8.920-751.0	Float Tank w/ Inlet Chemical Injection	\$585.00
8.920-977.0	Steam Valve	\$279.00

WARNING: Gas engine pressure washers can expose you to chemicals including Lead and Diisononyl Phthalate, which are known to the State of California to cause cancer, birth defects or other reproductive harm. For more information, visit www.P65Warnings.ca.gov.



TR-6000

TANDEM AXLE TRAILER



Tool box no longer available

KEY SPECS

- Compatible with PGHW, PDHW and PGDC Series Pressure Washers
- 330 Gallon Water Tank
- (4) 15" White Spoke Wheels
- 2 x 3" Structural Tubing
- Standard Electric Brakes w/ Breakaway Kit
- Recessed Electrical Wiring and Taillights
- 1000 lb. Swivel Jacks w/ Ball Couplers
- Heavy-Duty Chassis w/ Weather-Resistant Powder Coat Epoxy Finish
- 178"L x 80"W x 62"H

VALUE & OPTIONS

- NATM Affiliate Manufacturer
- Hydraulic Brake Upgrade
- Optional Hose Reel, Detergent Rack and Signage Plate



MODEL NO.	ORDER NO.	AXLE	WATER TANK	GVWR (LBS)	SHIP WT (LBS)	LIST PRICE
TR-6000	1.103-804.0	Tandem	330 gal	6000	1080	\$16,850

OPTIONS & ACCESSORIES		LIST PRICE
Factory-Installed Mounting Kits		
8.902-456.0	PGDC Series Mounting & Plumbing*	\$408.00
8.917-264.0	PGHW Series Mounting & Plumbing Kit**	\$418.00
8.920-435.0	PDHW Series Mounting & Plumbing Kit	\$421.00
Factory-Installed Brakes		
8.902-438.0	Hydraulic Brake Kit (two axles, 2-5/6" ball hitch)	\$2,035.00
8.902-452.0	Hydraulic Brake Kit (two axles, 3" lunette eye)	\$2,070.00
Factory-Installed Hitch Couplers		
8.902-471.0	3" Lunette Eye Hitch Coupler	\$182.00
8.924-475.0	2" Ball Coupler	\$141.00
Factory-Installed Hose Reel Kits (Hose Not Included)		
8.902-447.0	Hose Reel Kit (100' capacity, 3/8" high-pressure hose)	\$892.00
8.902-448.0	Hose Reel Kit (200' capacity, 3/8" high-pressure hose)	\$952.00
8.902-449.0	Hose Reel Kit (100' capacity, 3/4" garden hose)	\$892.00
Factory-Installed Detergent Rack		
8.912-409.0	2 x 5 gal. Bucket Detergent Rack	\$251.00
Factory-Installed Signage Plate		
8.902-469.0	Signage Plate	\$84.00

*Excludes model PGDC8-30324E **Excludes models PGHW5-50524E, PGHW8-30324E



3500

SINGLE AXLE TRAILER



KEY SPECS

- Compatible with PGHW, PDHW and PGDC Series Pressure Washers
- 200 Gallon Water Tank
- Single Axle Rated to 3500 lbs
- (2) 15" White Spoke Wheels
- 2 x 4" 10-Gauge Form Channel
- Standard Electric Brakes w/ Breakaway Kit
- Dual Tool/Accessory Boxes
- 1000 lb. Swivel Jacks w/ Ball Couplers
- Heavy-Duty Chassis w/ Weather-Resistant Black Powder Coat
- 138"L x 66"W x 52"H



VALUE & OPTIONS

- NATM Affiliate Manufacturer
- Hydraulic Brake Upgrade
- Optional Battery, Rock Guard and Hose Reel

MODEL NO.	ORDER NO.	AXLE	WATER TANK	GVWR (LBS)	SHIP WT (LBS)	LIST PRICE
3500	1.103-848.0	Single	200 gal	3,500	1072	\$13,070

OPTIONS & ACCESSORIES	LIST PRICE
-----------------------	------------

Factory-Installed Mounting Kits		LIST PRICE
8.917-399.0	PGDC Mounting Assembly*	\$123.00
8.917-299.0	PGHW Mounting Assembly**	\$123.00
8.920-434.0	PDHW Mounting Assembly	\$124.00
Factory-Installed Brakes		LIST PRICE
8.931-496.0	Hydraulic Brakes	\$2,560.00
Factory-Installed Battery		LIST PRICE
8.904-051.0	Battery installed on pressure washer	\$687.00
Factory-Installed Rock Guard		LIST PRICE
8.931-506.0	Rock Guard with Wand Holder	\$382.00
Factory-Installed Hitch Couplers		LIST PRICE
8.924-493.0	2-5/16" Ball Hitch Coupler	\$142.00
8.924-368.0	3" Lunette Eye Hitch Coupler	\$141.00
Factory-Installed Hose Reel Kits (Hose Not Included)		LIST PRICE
8.917-554.0	High Pressure Hose Reel (100' capacity)	\$697.00
8.917-555.0	Low Pressure Hose Reel (100' capacity)	\$697.00

*Excludes model PGDC8-30324E **Excludes models PGHW5-50524E, PGHW8-30324E



Shown with optional hose reel

TULE

SINGLE AXLE TRAILER

KEY SPECS

- Honda or Vanguard Engine
- 8 Gallon Diesel Fuel Tank
- Electric Start with Manual Start Backup
- 100"L x 45"W x 75"H

U.S. Design Patent No. 9,724,734 B2

VALUE & OPTIONS

- NATM Affiliate Manufacturer
- Adjustable Thermostat
- Lift Handle and Swing-Away Tongue
- Optional Hose Reel

MODEL NO.	ORDER NO.	GPM	PSI	DRIVE	ENGINE	START	PUMP	SHIP WT (LBS)	LIST PRICE
HDS 3.5/40 Ge MT	1.103-844.0	3.5	4000	Direct	Honda GX390	Electric	KS4040GR.3	750	\$15,530
HDS 3.5/40 Ge VMT	1.110-118.0	3.5	4000	Direct	Vanguard 400	Electric	KS4040GR.3	750	\$15,530

OPTIONS & ACCESSORIES		LIST PRICE
8.756-481.0*	EASY!Force trigger gun (North American Model)	\$104.00
8.756-797.0*	3-5 GPM Chemical Injector Kit	\$31.10
8.754-990.0*	12V Battery (required for hot water operation)	\$342.00
8.711-293.0*	Zinc plated variable pressure lance	\$96.00
8.925-182.0*	50', 3/8" hose, double-wire at 6000 PSI	\$160.00
8.750-682.0	Hose Reel Fixed 100', 5000 PSI, 3250 F, equipped for 3/8" hose	\$387.00
8.925-255.0	Hose Reel Bracket (Mount Kit)	\$341.00
Factory-Installed Options		
8.924-367.0	2-5/16" Ball Coupler	\$118.00
8.924-667.0	Lifting Kit	\$155.00
8.924-370.0	LED Lights	\$196.00
8.924-700.0	2-inch Collar Lock Coupler	\$460.00

*Included accessory



**LANDA[®] COLD WATER
PRESSURE WASHERS**

COLD WATER

COMPARISON CHART



SERIES / FEATURES	HD GAS	HD GAS PLUS	MP	PG
Power Type	Gasoline	Gasoline	Gas or Diesel	Gasoline
Max. GPM / PSI	5.0 / 4,000	5.0 / 4,000	4.5 / 5,000	4.7 / 4,000
Landa 5000 PSI Trigger Gun				
3 Hardened Stainless Steel Nozzles (15°, 25°, 40°)	■	■	■	■
Durable Variable Pressure Wand			■*	■*
2-Wire Landa Hose Rated for 6000 PSI			■	■
Pump Drive	Belt or Direct	Belt or Direct	Belt	Belt
Triplex Landa Pump with 7-Year Warranty	■	■*	■	■
Axial High-Pressure Pump with 1-Year Warranty				
Auto Start/Stop				□*
Downstream Detergent Injector			■	■
Easy-Start Valve (265cc and above gasoline models only)			■	■
Ground Fault Circuit Interrupter (1-phase electric models only)				■*
Heavy-Duty Roll Cage			■ Stainless Steel*	
Wireless Remote				
Magnetic Start Switch			■	■
Spring-Loaded Shock-Absorbing Feet				■
Time Delay Shutdown				
Tubed Pneumatic Tires				
Flat Free Tires	■	■	■	■

■ Standard Feature □ Available Feature * Applies to specific models within series ** Standard for gas models, optional diesel



HD ELECTRIC	PE	SEA	MPE	ZEF
Electric	Electric	Electric	Electric	Electric
3.0 / 2,000	4.8 / 3,000	4.2 / 3,000	5.0 / 5,000	1.8 / 1,400
		■		
■	■	■	■	15° only
	■*	■	■*	□
	■	□	■	□
Direct	Belt	Belt	Belt	Direct
■	■	■	■	■
	■*	□		■**
	■	■	■	□
	■		■	
	■*	■		■
			■	
		□		
	■	■	■	
	■			
		□		
■	■		■	

■ Standard Feature □ Available Feature *Applies to specific models within series **Standard for gas models, optional diesel



CLEAN WAVE

BATTERY-POWERED SKID

KEY SPECS

- Lithium or AGM Battery Power
- Direct Drive Pump
- 3.5 Max. GPM
- 4000 Max. PSI
- ECO Mode Extends Battery Life
- Steel Lifting Bars and Forklift-Compatable Frame
- Flat to Full Charge in 8 Hours
- Lithium Battery: Provides 3,000 Charge Cycles
- AGM Battery: Non-Gassing, Non-Spillable
- 58"L x 40"W x 38"H

VALUE & OPTIONS

- 7-Year Pump Warranty
- ECO Mode (Select Models)
- Optional Hose Reel



MODEL NO.	ORDER NO.	GPM	PSI	BATTERY	VOLTS	MAX RUNTIME (MINS)	FULL CHARGE CYCLE (HRS)	SHIP WT (LBS)	LIST PRICE
CleanWave Deluxe									
HD 3.5/40 Bp	1.106-612.0	3.5 / 2.0 ♦	4000 / 2000 ♦	Lithium	72	90 / 240 ♦	10 hours	770	\$28,325*

MODEL NO.	ORDER NO.	AXLE	WATER TANK	GVWR (LBS)	SHIP WT (LBS)	LIST PRICE
CleanWave Trailer						
3500E-HD 3.5/40 Bp Dx	1.103-859.0	Single	200 gal	3,500	1072	\$42,495*

♦ ECO Mode *Contact factory for final price. Model not available in Canada.

ACCESSORIES		LIST PRICE
4.118-005.0	EASY!Force trigger gun (German model) - Zero force required •	\$75.00
4.112-006.0	33" Spray Lance •	\$93.00
6.110-034.0	33' High-Pressure Hose •	\$87.00
8.933-337.0	CleanWave Hose Reel	Call for price

• Included



PRO AM HD

PORTABLE GAS

KEY SPECS

- Gas Power
- Direct Drive Pump
- 2.4 Max. GPM
- 3500 Max. PSI
- Removable Handle & Durable Welded Steel Frame
- 1 Gallon Gas Tank
- 1 Gallon Detergent Tank
- Oversized 12" Flat-Free Tires
- 4 x 1/4" Quick-Connect Nozzles: 15°, 25°, 40° & Soap
- 35' High-Pressure Hose
- 22.4"L x 20.7"W x 39.4"H

VALUE & OPTIONS

- ETL® Certified
- CETA® Performance Certified

MODEL NO.	ORDER NO.	GPM	PSI	DRIVE	CC	ENGINE	PUMP	SHIP WT (LBS)	LIST PRICE
Pro Am HD*	1.107-469.0	2.4	3500	Direct	196	Kärcher KXS	Triplex	85	\$899

*Model not available in Canada.

ACCESSORIES		LIST PRICE
1.117-023.0	Accessory kit - Turbo nozzle, 15" surface cleaner, foam cannon	\$435.00

WARNING: Gas engine pressure washers can expose you to chemicals including Lead and Diisononyl Phthalate, which are known to the State of California to cause cancer, birth defects or other reproductive harm. For more information, visit www.P65Warnings.ca.gov.



COMING SOON



Models come unbranded. Please order free Landa labels (see options)

HD GAS PLUS

PORTABLE GAS

KEY SPECS

- Gas Power
- Recoil or Electric Start w/Battery
- Belt or Direct Drive Pump
- Honda GX Engine
- 5.0 Max. GPM / 4000 Max. PSI
- 45.2"L x 25.3"W x 29.9"H

VALUE & OPTIONS

- ETL® Certified
- CETA® Performance Certified
- 7-Year Pump Warranty*
- Vibration Isolation Power Platform
- Large Wheels for Easy Maneuverability
- 50' Hose, Hose Hanger & Wand Holder
- Convertible from Cart to Skid

*Models with Landa pump only

MODEL NO.	ORDER NO.	GPM	PSI	DRIVE	PUMP	ENGINE	ELECTRIC START	CC	SHIP WT (LBS)	LIST PRICE
HD 3.0/27 G		3	2700	Direct	Landa LPP2535	GX200	No	196	145	
HD 3.5/35 G		3.5	3500	Direct	Landa LPP3035	GX270	No	270	166	
HD 4.0/40 G		4	4000	Direct	Landa LS4040	GX390	No	389	185	
HD 4.0/40 Ge		4	4000	Direct	Landa LS4040	GX390 E/S	Yes	389	208	
HD 3.0/27 G AR		3	2700	Direct	AR RCV3G27D-F7	GX200	No	196	180	
HD 3.5/35 G AR		3.5	3500	Direct	AR RRV3G36D	GX270	No	270	213	
HD 4.0/40 G AR		4	4000	Direct	AR RRV4G40HD-F24	GX390	No	389	228	
HD 4.0/40 Ge AR		4	4000	Direct	AR RRV4G40HD-F24	GX390 E/S	Yes	389	251	
HD 3.0/27 G GP		3	2700	Direct	GP EP1506G6	GX200	No	196	228	
HD 3.5/35 G GP		3.5	3500	Direct	GP EP1309G8	GX270	No	270	251	
HD 4.0/40 G GP		4	4000	Direct	GP EP1313G8	GX390	No	389	138	
HD 4.0/40 Ge GP		4	4000	Direct	GP EP1313G8	GX390 E/S	Yes	389	166	
HD 3.0/27 GB		3	2700	Belt	Landa LBP3030R	GX200	No	196	181	
HD 3.5/35 GB		3.5	3500	Belt	Landa LPP3035G1	GX270	No	270	204	
HD 4.0/40 GB		4	4000	Belt	Landa LM3840R.3	GX390	No	389	179	
HD 4.0/40 GeB		4	4000	Belt	Landa LM3840R.3	GX390 E/S	Yes	389	208	
HD 5.0/30 GB		5	3000	Belt	Landa LM4035R.3	GX390	No	389	223	
HD 5.0/30 GeB		5	3000	Belt	Landa LM4035R.3	GX390 E/S	Yes	389	245	
HD 3.0/27 GB AR		3	2700	Belt	AR RRA35G30N	GX200	No	196	223	
HD 3.5/35 GB AR		3.5	3500	Belt	AR RRA4G40N	GX270	No	270	245	
HD 4.0/40 GB AR		4	4000	Belt	AR RRA4G40N	GX390	No	389	143	
HD 4.0/40 GeB AR		4	4000	Belt	AR RRA4G40N	GX390 E/S	Yes	389	164	
HD 5.0/30 GB AR		5	3000	Belt	AR RRA55G30N	GX390	No	389	178	
HD 5.0/30 GeB AR		5	3000	Belt	AR RRA55G30N	GX390 E/S	Yes	389	201	
HD 3.0/27 GB GP		3	2700	Belt	GP EP1513S17	GX200	No	196	183	
HD 3.5/35 GB GP		3.5	3500	Belt	GP ES2010S	GX270	No	270	212	
HD 4.0/40 GB GP		4	4000	Belt	GP ES2010S	GX390	No	389	227	
HD 4.0/40 GeB GP		4	4000	Belt	GP ES2010S	GX390 E/S	Yes	389	249	
HD 5.0/30 GB GP		5	3000	Belt	GP ES2013S	GX390	No	389	227	
HD 5.0/30 GeB GP		5	3000	Belt	GP ES2013S	GX390 E/S	Yes	389	249	

COMING JANUARY 2025

COMING JANUARY 2025

OPTIONS & ACCESSORIES	LIST PRICE	OPTIONS & ACCESSORIES	LIST PRICE
8.765-913.0 Landa Brand Label for HD Gas Plus Series, 4 x 0.77" (Black)	FREE	8.783-040.0 Lance 44" Zinc Plated, Handle & Coupler	\$31.00
8.765-914.0 Landa Brand Label for HD Gas Plus Series, 10 x 2" (Black)	FREE	8.921-618.0 Non-Marking Hose 3/8" x 50' 4K Gray A+ SOXSW	\$230.00
9.808-467.0 Trailer Kit (Fittings, Skid Feet, Low Pressure Hoses)	TBD	8.925-129.0 Hose, 50' x 3/8", 1w, TS, SOXSW	\$126.00
9.808-468.0 Skid Feet (x4)	TBD	8.925-229.0 Legacy Hose 100' x 3/8" ID, 4500 PSI, 2-Wire, Smooth Cover, Black	\$275.00
9.808-469.0 Hose Reel (Bracket Only) - Direct Drive	TBD	8.753-572.0 A+ Surface Cleaner SC21	\$700.00
9.808-470.0 Hose Reel (Bracket Only) - Belt Drive	TBD	8.753-573.0 A+ Surface Cleaner SC24	\$748.00
9.808-471.0 Self-Retractable Hose Reel w/Jumper Hose & Adapters)	TBD	9.302-242.0 Legacy Turbo Nozzle, 3.5, 4350 PSI	\$122.00
8.765-909.0 Injector 6" Vinyl Hose & Foot Valve Gray	TBD	9.302-243.0 Legacy Turbo Nozzle, 4.0, 4350 PSI	\$122.00
8.765-910.0 Injector Adjustable Hi-Draw 1.8 Acid Version (HD 3.0/27 G)	TBD	9.302-247.0 Legacy Turbo Nozzle, 6.5, 4350 PSI	\$122.00
8.765-911.0 Injector Adjustable Hi-Draw 2.1 Acid Version (HD 3.5/35 G, HD 4.0/40 G)	TBD	8.750-476.0 Hose Reel 50' Legacy	\$388.00
8.765-912.0 Injector Adjustable Hi-Draw 2.3 Acid Version (HD 5.0/30 G)	TBD	8.711-192.0 Hose Reel 50' AP	\$166.00
4.760-846.0 Trigger Gun Classic G3/8	\$59.00	9.804-067.0 Hose Reel 100' AP	\$179.00

WARNING: Gas engine pressure washers can expose you to chemicals including Lead and Diisononyl Phthalate, which are known to the State of California to cause cancer, birth defects or other reproductive harm. For more information, visit www.P65Warnings.ca.gov.



HD GAS

PORTABLE GAS

KEY SPECS

- Gas Power
- Recoil or Electric Start w/Battery
- Belt or Direct Drive Pump
- 5.0 Max. GPM
- 4000 Max. PSI
- 41"L x 22"W x 24"H (HD3/3.5)
- 43"L x 26"W x 27"H (HD4/4.5)

VALUE & OPTIONS

- ETL® Certified
- CETA® Performance Certified
- 7-Year Pump Warranty
- Optional Skid Mount Feet
- Optional Hose Reel
- Convertible from Cart to Skid

MODEL NO.	ORDER NO.	GPM	PSI	DRIVE	START	PUMP	ENGINE	CC	SHIP WT (LBS)	LIST PRICE
HD 3.0/27 G	9.807-727.0	3.0	2700	Direct	Recoil	LPP3035G	Honda GX200	196	112	\$1,735
HD 3.5/35 G	9.807-728.0	3.5	3500	Direct	Recoil	LPP3535G.1	Honda GX270	270	130	\$2,145
HD 3.5/35 G	1.107-421.0	3.5	3500	Direct	Recoil	LP3535G1	Vanguard 300	270	130	\$1,815
HD 4.0/40 G	9.807-729.0	4.0	4000	Direct	Recoil	LS4040G.3	Honda GX390	389	149	\$2,445
HD 4.0/40 G	1.107-429.0	4.0	4000	Direct	Recoil	LS4040G.3	Vanguard 400	408	149	\$2,065
HD 4.0/40 Ge	9.807-730.0	4.0	4000	Direct	Electric	LS4040G.3	Honda GX390	389	158	\$2,985
HD 3.0/27 GB	9.807-731.0	3.0	2700	Belt	Recoil	LBP3030R	Honda GX200	196	123	\$2,125
HD 3.5/35 GB	9.807-732.0	3.5	3500	Belt	Recoil	LM3540R.3	Honda GX270	270	156	\$2,670
HD 3.5/35 GB	1.107-422.0	3.5	3500	Belt	Recoil	LM3540R.3	Vanguard 300	270	156	\$2,255
HD 4.0/40 GB	9.807-733.0	4.0	4000	Belt	Recoil	LM3840R.3	Honda GX390	389	160	\$3,185
HD 4.0/40 GB	1.107-430.0	4.0	4000	Belt	Recoil	LM3840R.3	Vanguard 400	408	160	\$2,695
HD 4.0/40 GeB	9.807-734.0	4.0	4000	Belt	Electric	LM3840R.3	Honda GX390	389	196	\$3,870
HD 5.0/30 GB	9.808-253.0	5.0	3000	Belt	Recoil	LM4035.R3	Honda GX390	389	160	\$3,245
HD 5.0/30 GB	1.107-446.0	5.0	3000	Belt	Recoil	LM4035.R3	Vanguard 400	408	160	\$2,695
HD 5.0/30 GeB	9.808-388.0	5.0	3000	Belt	Electric	LM4035.R3	Honda GX390	389	160	\$3,870

OPTIONS & ACCESSORIES		LIST PRICE
4.760-846.0	Trigger Gun Classic G3/8	\$59.00
8.921-618.0	Non-Marking Hose 3/8" x 50' 4K Gray A+ SOXSW	\$230.00
8.925-129.0	Hose, 50' x 3/8", 1w, TS, SOXSW	\$126.00
8.925-229.0	Legacy Hose 100' x 3/8" ID, 4500 PSI, 2-Wire, Smooth Cover, Black	\$275.00
8.765-909.0	Injector 6' Vinyl Hose & Foot Valve Gray	TBD
8.753-572.0	A+ Surface Cleaner SC21	\$700.00
8.753-573.0	A+ Surface Cleaner SC24	\$748.00
9.302-242.0	Legacy Turbo Nozzle, 3.5, 4350 PSI	\$122.00
9.302-243.0	Legacy Turbo Nozzle, 4.0, 4350 PSI	\$122.00
9.302-247.0	Legacy Turbo Nozzle, 6.5, 4350 PSI	\$122.00

WARNING: Gas engine pressure washers can expose you to chemicals including Lead and Diisononyl Phthalate, which are known to the State of California to cause cancer, birth defects or other reproductive harm. For more information, visit www.P65Warnings.ca.gov.



Configuration 1



Configuration 2

HD GAS SKID

PORTABLE GAS SKID

KEY SPECS

- Compatible with Select HD Gas Series and Teton Series Direct Drive Pressure Washers
- Fits Standard UTV/ATV Bed (Assembly Required)
- 50 Gallon Water Tank*
- 40"L x 48"W x 35"H

* Select configurations

VALUE & OPTIONS

- ETL® Certified
- Skid Feet Included
- Forklift Holes Included
- Hose Reel(s) Included

COMPATIBLE HD GAS MODELS

- HD 3.0/27 G (9.807-727.0)
- HD 3.5/35 G (9.807-728.0)
- HD 3.5/35 G (1.107-421.0)
- HD 4.0/40 G (9.807-729.0)
- HD 4.0/40 G (1.107-429.0)
- HD 4.0/40 Ge (9.807-730.0)
- HD 4.0/40 Ge (1.107-435.0)

COMPATIBLE TETON MODELS

- HD 3.0/27 G Teton (1.107-398.0)
- HD 4.0/40 G Teton (1.107-399.0)
- HD 4.0/40 Ge Teton (1.107-400.0)
- HD 3.5/35 G Teton (1.107-440.0)

CONFIGURATION	ORDER NO.	FRAME	WATER TANK	HOSE REELS	SHIP WT (LBS)	LIST PRICE
1. HD Pallet Skid with Tank, 1 Hose Reel	9.807-834.0	Mild Steel	50 Gallon	1	185	\$1,655
2. HD Pallet Skid, 2 Hose Reels	9.807-839.0	Mild Steel	Not Included	2	172	\$1,500

ACCESSORIES		LIST PRICE
8.753-572.0	A+ Surface Cleaner SC21	\$700.00
8.753-573.0	A+ Surface Cleaner SC24	\$748.00
9.302-243.0	Legacy Turbo Nozzle, 4.0 GPM, 4350 PSI	\$122.00
8.925-228.0	Landa Hose, 100' x 3/8" ID, 6000 PSI, 2-Wire, Smooth Cover, Black High Pressure Hose	\$299.00

WARNING: Gas engine pressure washers can expose you to chemicals including Lead and Diisononyl Phthalate, which are known to the State of California to cause cancer, birth defects or other reproductive harm. For more information, visit www.P65Warnings.ca.gov.



TETON

PORTABLE GAS

KEY SPECS

- Gas Power
- Recoil or Electric Start
- Belt or Direct Drive Pump
- 5.0 Max. GPM
- 4000 Max. PSI
- Converts from Cart to Skid
- 45"L x 28"W x 29"H

VALUE & OPTIONS

- ETL® Certified
- 7-Year Pump Warranty
- 4-Year Engine Warranty
- Optional Hose Reel Kit

MODEL NO.	ORDER NO.	GPM	PSI	DRIVE	START	ENGINE	CC	SHIP WT (LBS)	LIST PRICE
HD 3.0/27 G Teton*	1.107-398.0	3.0	2700	Direct	Recoil	Kärcher	212	112	\$1,315
HD 4.0/40 G Teton*	1.107-399.0	4.0	4000	Direct	Recoil	Kärcher	420	130	\$1,985
HD 4.0/40 Ge Teton*	1.107-400.0	4.0	4000	Direct	Electric	Kärcher	420	158	\$2,205
HD 3.5/35 G Teton*	1.107-440.0	3.5	3500	Direct	Recoil	Kärcher	302	132	\$1,585
HD 3.0/27 GB Teton*	1.107-441.0	3.0	2700	Belt	Recoil	Kärcher	212	123	\$1,680
HD 3.5/35 GB Teton*	1.107-442.0	3.5	3500	Belt	Recoil	Kärcher	302	158	\$2,090
HD 4.0/40 GB Teton*	1.107-443.0	4.0	4000	Belt	Recoil	Kärcher	420	169	\$2,580
HD 4.0/40 GeB Teton*	1.107-444.0	4.0	4000	Belt	Electric	Kärcher	420	205	\$3,235
HD 5.0/30 GB Teton*	1.107-445.0	5.0	3000	Belt	Recoil	Kärcher	420	169	\$2,580
HD 5.0/30 GeB Teton*	1.107-472.0	5.0	3000	Belt	Electric	Kärcher	420	205	\$3,235

*Model not available in Canada.

ACCESSORIES		LIST PRICE
8.750-247.0	Trigger Gun, model M407	\$38.50
8.925-129.0	Hose, 50' x 3/8", 1w, 4,000 PSI SWXSO	\$126.00
8.783-039.0	Lance 30" Zinc plated, handle & coupler (for HD 3.0/27 G Classic)	\$29.90
8.783-040.0	Lance 44" Zinc plated, handle & coupler (for HD 4.0/40 G Classic and HD 4.0/40 Ge Classic)	\$31.00
9.802-216.0	Injector, Chem, NON ADJ, 0.083	\$48.00
8.712-429.0	Nozzle	\$270.00
8.925-229.0	Legacy, 100' x 3/8" ID, 6000 PSI, 2-wire, smooth cover, black high pressure hose	\$275.00
8.753-572.0	A+ Surface Cleaner SC21	\$700.00
8.753-573.0	A+ Surface Cleaner SC24	\$748.00
9.302-243.0	Legacy Turbo Nozzle, 4.0, 4350 PSI	\$122.00
9.807-754.0	Skid mount feet	\$45.10
9.807-750.0	37.5" long handle	\$38.50
9.807-753.0	Lance holder	\$82.50
9.807-752.0	Hose storage hook	\$93.50
9.807-751.0	Handle with hose reel (mild steel anthracite handle)	\$417.00
8.929-511.0	Belt Drive Hose Reel Bracket Kit	\$152.00
8.929-509.0	Direct Drive Hose Reel Bracket Kit	\$157.00

WARNING: Gas engine pressure washers can expose you to chemicals including Lead and Diisononyl Phthalate, which are known to the State of California to cause cancer, birth defects or other reproductive harm. For more information, visit www.P65Warnings.ca.gov.



MP

PORTABLE GAS

KEY SPECS

- Diesel or Gas Power
- Belt Drive Pump
- Electric Start Engine*
- 5-Gallon Fuel Tank
- 4.5 Max. GPM
- 5000 Max. PSI
- 42"L x 26"W x 30"H (MP-3)
- 46"L x 30"W x 36"H (MP-4)

*Select models. Battery not included.

VALUE & OPTIONS

- ETL® Certified
- CETA® Performance Certified
- 7-Year Pump Warranty
- Optional Hose Reel Kit



MODEL NO.	ORDER NO.	GPM	PSI	PUMP	PUMP RPM	ENGINE	FUEL	CC	SHIP WT (LBS)	LIST PRICE
MP-373534	1.107-001.0	3.7	3500	LT4540R	1185	Honda GX390	Gasoline	389	295	\$4,650
MP-455034E* ♦	1.107-002.0	4.5	5000	LX5450R	1185	Honda GX690	Gasoline	688	415	\$10,360

*Electric start engine (battery not included) ♦ Tandem axle

OPTIONS & ACCESSORIES		LIST PRICE
9.801-028.0	E-Zee Hose Reel Kit, (single axle, 100' capacity)	\$425.00
9.801-029.0	Non-Pivot Hose Reel Kit, (tandem axle, 100' capacity)	\$707.00

WARNING: Gas engine pressure washers can expose you to chemicals including Lead and Diisononyl Phthalate, which are known to the State of California to cause cancer, birth defects or other reproductive harm. For more information, visit www.P65Warnings.ca.gov.



PG

PORTABLE GAS



KEY SPECS

- Gas Power
- Belt Drive Pump
- Electric Start Engine*
- 4.7 Max. GPM
- 4000 Max. PSI
- 48"L x 27"W x 30"H
- 40"L x 27"W x 25"H (PG-20324)

*Select models. Battery not included.

VALUE & OPTIONS

- ETL® Certified
- CETA® Performance Certified
- 7-Year Pump Warranty

MODEL NO.	ORDER NO.	GPM	PSI	PUMP	PUMP RPM	ENGINE	CC	SHIP WT (LBS)	LIST PRICE
PG4-20324	1.107-010.0	4.2	2000	LT4540R.2	1300	Honda GX270	270	230	\$3,760
PG4-35324	1.107-011.0	3.7	3500	LT4540R.2	1185	Honda GX390	389	250	\$4,960
PG4-35224	1.107-432.0	3.7	3500	LT4540R.2	1185	Vanguard 14	479	250	\$4,960
PG5-35224E*	1.107-013.0	4.7	3500	LT6036R.2	1185	Vanguard 16	479	275	\$6,815
PG4-40324E*	1.107-012.0	4.0	4000	LT4540R.2	1190	Honda GX630	688	275	\$7,465
PG4-40324EK*	1.107-453.0	4.0	4000	LT4540R.2	1190	Kärcher LC2V80F-D	764	286	\$6,515

*Electric start engine (battery not included)

WARNING: Gas engine pressure washers can expose you to chemicals including Lead and Diisononyl Phthalate, which are known to the State of California to cause cancer, birth defects or other reproductive harm. For more information, visit www.P65Warnings.ca.gov.

Effective January 1, 2025. Prices, specifications and product descriptions subject to change without notice.



PC

PORTABLE GAS



KEY SPECS

- Gas Power
- Direct Drive Pump
- 10-G Steel Chassis
- Shock-Absorbing Rubber Feet
- Epoxy Powder Coat
- 3.8 Max. GPM
- 4000 Max. PSI
- 35"L x 21"W x 24"H

VALUE & OPTIONS

- ETL® Certified
- CETA® Performance Certified
- 7-Year Pump Warranty

MODEL NO.	ORDER NO.	GPM	PSI	PUMP	PUMP RPM	ENGINE	CC	SHIP WT (LBS)	LIST PRICE
PC3-27324	1.107-006.0	2.5	2700	LPP2535G	3200	Honda GX200	196	135	\$2,585
PC4-35324	1.107-008.0	3.8	3500	LS4040GR.3	3200	Honda GX390	389	185	\$3,335
PC4-40324	1.107-224.0	3.5	4000	LS3540GR.3	3200	Honda GX390	389	188	\$3,335

WARNING: Gas engine pressure washers can expose you to chemicals including Lead and Diisononyl Phthalate, which are known to the State of California to cause cancer, birth defects or other reproductive harm. For more information, visit www.P65Warnings.ca.gov.



HD ELECTRIC

PORTABLE ELECTRIC

KEY SPECS

- Electric Power
- Direct Drive Pump
- Converts From Cart to Skid
- 3.5 Max. GPM
- 2000 Max. PSI
- 41"L x 22"W x 25"H

VALUE & OPTIONS

- ETL® Certified
- 7-Year Pump Warranty
- Cool Bypass Technology
- Optional Auto Start/Stop*

* Standard on select models

MODEL NO.	ORDER NO.	GPM	PSI	PUMP	PUMP RPM	MOTOR HP	VOLTS	PHASE	AMPS	SHIP WT (LBS)	LIST PRICE
HD 2.0/1000 Ed	9.801-805.0	2.0	1000	LFP2030S	1725	1.5	120	1	15	162	\$2,060
HD 1.9/1300 Ed	9.801-806.0	1.9	1300	LFP2030S	1725	2.0	120	1	20	175	\$2,230
HD 3.0/1000 Ed	9.801-807.0	3.0	1000	LFP2830S	1725	2.0	120	1	20	181	\$2,325
HD 3.5/2000 Ea	9.801-808.0	3.5	2000	LFP3530S	3450	5.0	230	1	22	182	\$3,320
HD 1.8/1350 Ed*	9.801-809.0	1.8	1350	LFP2030S	3450	2.0	120	1	17	180	\$2,975

*Equipped with Auto Start/Stop option

OPTIONS & ACCESSORIES		LIST PRICE
9.807-754.0	Skid Mount Feet	\$45.10
9.807-750.0	37.5" Long Handle	\$38.50
9.807-753.0	Wand Holder	\$82.50
9.807-752.0	Hose Storage Hook	\$93.50
9.807-751.0	Handle with Hose Reel (mild steel anthracite handle)	\$417.00
8.753-572.0	A+ Surface Cleaner SC21	\$700.00
8.753-573.0	A+ Surface Cleaner SC24	\$748.00
9.302-243.0	Legacy Turbo Nozzle, 4.0, 4350 PSI	\$122.00
8.711-105.0	Rotating Nozzle, 3.0	\$86.00
8.711-100.0	Rotating Nozzle, 5.0	\$86.00
8.925-228.0	Landa Hose, 100' x 3/8" ID, 6000 PSI, 2-Wire, Smooth Cover, Black High Pressure Hose	\$299.00



PE

PORTABLE ELECTRIC



KEY SPECS

- Electric Power
- Belt Drive Pump
- 4.8 Max. GPM
- 3000 Max. PSI
- 48"L x 28"W x 28"H

VALUE & OPTIONS

- ETL® Certified
- CETA® Performance Certified
- 7-Year Pump Warranty
- Optional Auto Start/Stop

MODEL NO.	ORDER NO.	GPM	PSI	PUMP	PUMP RPM	MOTOR HP	VOLTS	PHASE	AMPS	SHIP WT (LBS)	LIST PRICE
PE2A-15024D*	1.106-105.0	1.8	1500	LBP3030R	1650	2.0	120	1	21	193	\$4,240
PE4-20024A	1.106-010.0	4.2	2000	LT6036R.2	900	6.2	230	1	27	285	\$4,740
PE4-30024A	1.106-013.0	3.5	3000	LT6036R.2	800	7.5	230	1	36	337	\$5,355
PE4-30024B	1.106-014.0	3.5	3000	LT6036R.2	800	7.5	230	3	21.5	270	\$5,355
PE4-30024C	1.106-015.0	3.5	3000	LT6036R.2	800	7.5	460	3	10.5	280	\$5,355
PE5-30024B	1.106-016.0	4.8	3000	LT6036R.2	1060	10.0	230	3	26.8	290	\$6,270
PE5-30024C	1.106-017.0	4.8	3000	LT6036R.2	1060	10.0	460	3	13.4	285	\$6,270

*Equipped with Auto Start/Stop, two yellow nozzles, two green nozzles, and a variable pressure wand.



Mild Steel

Stainless Steel



SEA

STATIONARY ELECTRIC

KEY SPECS

- Electric Power
- Belt Drive Pump
- Stainless or Mild Steel Cabinet
- 4.2 Max. GPM
- 3000 Max. PSI
- 31"L x 21"W x 16"H

VALUE & OPTIONS

- ETL® Certified
- CETA® Performance Certified
- 7-Year Pump Warranty
- Time Delay Shutdown
- Optional Auto Start/Stop
- Optional Wireless Remote

MODEL NO.	ORDER NO.	CABINET	GPM	PSI	PUMP	PUMP RPM	MOTOR HP	VOLTS	PHASE	AMPS	SHIP WT (LBS)	LIST PRICE
SEA3-11024D	1.106-500.0	SS	2.8	1000	LBP3030R	1540	2.0	120	1	20	210	\$4,925
SEA4-20024A	1.106-501.0	SS	4.2	2000	LT6036R.2	1013	6.2	230	1	28	280	\$5,795
SEA4-20024B	1.106-502.0	SS	4.2	2000	LT6036R.2	1013	6.2	230	3	16	220	\$5,915
SEA4-20024C	1.106-503.0	SS	4.2	2000	LT6036R.2	1013	6.2	460	3	7.2	220	\$5,915
SEA4-20024G	1.106-505.0	SS	4.2	2000	LT6036R.2	997	6.2	208	1	30	297	\$5,915
SEA4-20024H	1.106-506.0	SS	4.2	2000	LT6036R.2	1028	6.2	208	3	18.5	220	\$5,915
SEA4-30024B	1.106-507.0	SS	3.5	3000	LT6036R.2	943	7.5	230	3	21.5	235	\$6,445
SEA4-30024C	1.106-508.0	SS	3.5	3000	LT6036R.2	943	7.5	460	3	10.5	305	\$6,445
SEA3-11024D	1.106-583.0	MS	2.8	1000	LBP3030R	1500	2.0	120	1	20	275	\$4,125
SEA4-20024A	1.106-584.0	MS	4.2	2000	LM4035R.3	1281	6.2	230	1	29	275	\$4,940
SEA4-20024B	1.106-585.0	MS	4.2	2000	LM4035R.3	1281	6.2	230	3	11	275	\$4,940
SEA4-20024C	1.106-586.0	MS	4.2	2000	LM4035R.3	1281	6.2	460	3	11	275	\$4,940
SEA4-20024H	1.106-587.0	MS	4.2	2000	LM4035R.3	1281	6.2	208	3	16	275	\$4,940
SEA4-30024B	1.106-588.0	MS	3.5	3000	LM4035R.3	1070	7.5	230	3	19	275	\$5,590
SEA4-30024C	1.106-589.0	MS	3.5	3000	LM4035R.3	1070	7.5	460	3	11	275	\$5,215

OPTIONS & ACCESSORIES	LIST PRICE
9.801-036.0 Cox Hose Reel Kit (floor stand / wall mount)	\$619.00
8.903-521.0 E-Zee Hose Reel & Mounting Kit	\$341.00
9.802-265.0 Hose Reel, Mini, (fits wall bracket, 150' capacity)	\$450.00
8.711-860.0 Hose Reel, Mini, (fits wall bracket, 100' capacity)	\$420.00
8.903-040.0 24" Floor Stand	\$585.00
9.801-035.0 Wheel Kit (4 casters) for Floor Stands	\$649.00

*Factory installed

¹Not compatible with Float Tank options

²Not available on stainless steel model SEA3-11024D

OPTIONS & ACCESSORIES	LIST PRICE
Stainless Steel Models Only	
8.929-497.0 LanCom Kit 1-step 460V 3 ph ^{*12}	\$1,400.00
8.929-498.0 LanCom Kit 2-step 460V 3 ph ^{*12}	\$1,770.00
8.930-163.0 LanCom Kit 1-step 208/230V 3ph ^{*12}	\$1,400.00
8.930-177.0 LanCom Kit 2 step 208/230V 3ph ^{*12}	\$1,770.00
8.929-382.0 LanCom Kit 1-step 208/230v 1 ph ^{*12}	\$1,375.00
8.929-383.0 LanCom Kit 2-step 208/230v 1ph ^{*12}	\$1,735.00
8.903-461.0 Remote On/Off Switch (Time Delay units only)*	\$108.00
8.930-358.0 Additional LanCom Remote	\$696.00
8.903-619.0 Wall Mount Bracket Assembly	\$676.00
8.903-511.0 Auto Start/Stop Kit 208/230/460v 3ph*	\$48.20
8.929-380.0 Auto Start/Stop Kit 120v 1ph*	\$47.10
8.929-381.0 Auto Start/Stop Kit 208/230V 1ph*	\$47.10
8.904-527.0 Wheel Kit with Detergent Rack (SS)	\$1,850.00
8.903-448.0 Float Tank Option with Inlet Soap Injection*	\$576.00
Mild Steel Models Only	
8.903-045.0 Time Delay Shutdown Kit 120v 1ph*	\$469.00
8.929-374.0 Time Delay Shutdown Kit 208/230v 1ph*	\$453.00
8.903-041.0 Time Delay Shutdown Kit 3ph*	\$469.00
8.929-376.0 Auto Start/Stop Kit 120v 1ph*	\$453.00
8.929-377.0 Auto Start/Stop Kit 208/230V 1ph*	\$453.00
8.903-047.0 Auto Start/Stop Kit 208/230/460V 3ph*	\$469.00
9.801-033.0 Wall Mount Bracket Assembly	\$220.00



MPE

PORTABLE ELECTRIC

KEY SPECS

- Electric Power
- Belt Drive Pump
- 230V 3ph or 460V 3ph w/ NEMA 4 Electrical Box
- Heavy-Duty Inlet Filter
- High-Impact Steel Roll Cage
- 4.8 Max. GPM
- 3000 Max. PSI
- 42"L x 26"W x 30"H

VALUE & OPTIONS

- ETL® Certified
- CETA® Performance Certified
- 7-Year Pump Warranty
- Optional Hose Reels

MODEL NO.	ORDER NO.	GPM	PSI	PUMP	PUMP RPM	MOTOR HP	VOLTS	PHASE	AMPS	SHIP WT (LBS)	LIST PRICE
MPE5-50024B	1.106-001.0	5.0	5000	LX5450R	1740	20.0	230	3	48	534	\$10,250
MPE5-50024C	1.106-002.0	5.0	5000	LX5450R	1740	20.0	460	3	26	534	\$10,250

OPTIONS & ACCESSORIES		LIST PRICE
9.801-028.0	E-Zee Hose Reel Kit, (single axle, 100' capacity)	\$425.00
9.801-029.0	Non-Pivot Hose Reel Kit, (tandem axle, 100' capacity)	\$707.00



ZEF

PORTABLE ELECTRIC

KEY SPECS

- Electric Power
- Direct Drive Pump
- 1.8 Max. GPM
- 1400 Max. PSI
- 20"L x 19"W x 17"H

VALUE & OPTIONS

- ETL® Certified
- 7-Year Pump Warranty
- 5-Year Heating Coil Warranty
- Wall Switch Included
- Auto Start/Stop Included

MODEL NO.	ORDER NO.	GPM	PSI	PUMP	PUMP DRIVE	PUMP RPM	MOTOR HP	VOLTS	PHASE	AMPS	SHIP WT (LBS)	LIST PRICE
ZEF2-14024D	1.107-090.0	1.8	1400	Triplex	1725	LFP2030S	2.0	120	1	20	125	\$2,405

OPTIONS & ACCESSORIES		LIST PRICE
8.920-952.0	Wall Mount & Wand Holder	\$330.00
8.904-464.0	Quick-Coupled Soap Injector, 6' Poly Tubing	\$109.00



HOT WATER GENERATOR

PORTABLE WATER HEATER

KEY SPECS

- Diesel, Kerosene Heated
- Heater Add-On for Cold Water Pressure Washers
- 5.0 Max. GPM
- 3000 Max. PSI
- Heavy-Duty Steel Cabinet
- Epoxy Powder Coat Finish
- 35"L x 47"W x 50"H (Model 5.0/30 Ed)
- 27"L x 37"W x 39"H (Hot Box)

VALUE & OPTIONS

- ETL® Certified
- 7-Year Pump Warranty

MODEL NO.	ORDER NO.	GPM	PSI	ELECTRICAL	AMPS	BTU/HOUR	HEAT	SHIP WT (LBS)	LIST PRICE
Heater 5.0/30 Ed	1.575-650.0	Up to 5	3000	120V	5	300,000	Diesel	330	\$4,555
Hot Box	1.103-910.0	Up to 5	3000	120V	5	300,000	Diesel, Kerosene	320	\$5,095



Model 9462



Model 9452



STATIONARY HOT WATER GENERATOR

STATIONARY WATER HEATER

KEY SPECS

- Oil or Natural Gas-Fired Heat
- Heater Add-On for Cold Water Pressure Washers
- 10.0 Max. GPM
- 3200 Max. PSI
- Heavy-Duty Steel Cabinet
- Epoxy Powder Coat Finish
- 32.5"L x 25"W x 50.5"H (9450/9452)
- 40.5"L x 32"W x 65"H (9460/9462)

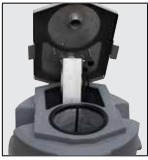
VALUE & OPTIONS

- ETL® Certified
- 7-Year Pump Warranty
- Flow Switch for Burner Control

MODEL NO.	ORDER NO.	GPM	PSI	ELECTRICAL	AMPS	BTU/HOUR	HEAT	SHIP WT (LBS)	LIST PRICE
9450	1.103-905.0	6	3200	115V	8	700,000	Oil-Fired	525	\$8,545
9452	1.103-906.0	6	3200	115V	8	540,000	Natural-Gas-Fired	500	\$8,240
9460	1.103-907.0	10	3200	115V	8	920,000	Oil-Fired	920	\$13,490
9462	1.103-908.0	10	3200	115V	8	920,000	Natural-Gas-Fired	935	\$12,740

OPTIONS & ACCESSORIES		LIST PRICE
8.903-076.0	Natural-Gas to LP Conversion for Model 9452 *	\$201.00
8.903-075.0	Natural-Gas to LP Conversion for Model 9462 *	\$201.00
9.801-040.0	10" Natural Gas-Fired Draft Diverter for Model 9452	\$197.00
8.717-730.0	12" Natural Gas-Fired Draft Diverter for Model 9462	\$309.00
8.749-806.0	10" Power Dampener	\$443.00
8.753-171.0	12" Power Dampener	\$476.00
8.749-807.0	Power Dampener Wiring Harness	\$124.00

* Factory installed



MWP

WATER RECOVERY

KEY SPECS

- Recovers and Transfers Waste Water
- 27 Gallon Holding Tank
- Rated up to 120°F
- 3-Stage Vacuum Motor Delivers 100 CFM
- 100" Sealed Lift Vacuum
- Drain Port and Filter Basket Prevent Clogging
- 24"L x 27"W x 59"H

VALUE & OPTIONS

- ETL® Certified
- 7-Year Pump Warranty
- Bolt-On Trailer Mounting System on Tank Base
- Optional Caster Wheel Kit

MODEL NO.	ORDER NO.	ELECTRICAL	AMPS	TANK	VAC MOTOR	RECOVERY	SHIP WT (LBS)	LIST PRICE
MWP-30E	1.103-518.0	120V	15	27 Gallon	3 Stage 100 CFM 100" Sealed Lift	30 gpm	127	\$2,570

OPTIONS & ACCESSORIES		LIST PRICE
8.928-887.0	Caster Wheel Kit	\$129.00
8.925-858.0	Vacuum Discharge Hose Kit	\$219.00
8.618-451.0	50' of High Temp 2" Vacuum Hose	\$244.00
8.928-850.0	Scupper Head	\$104.00
Drain Covers and Water Dikes		
8.751-135.0	Drain Cover, 36" x 36", 30oz PVC	\$442.00
8.751-136.0	Drain Cover, 48" x 48", 30oz PVC	\$527.00
8.751-137.0	Drain Cover, 48" x 48", Urethane	\$555.00
8.751-138.0	Water Dike, 10', 22oz PVC	\$261.00
8.751-139.0	Water Dike, 10', 40oz Urethane	\$397.00
8.751-140.0	Water Dike, 20', 22oz PVC	\$364.00
8.751-141.0	Water Dike, 20', 40oz Urethane	\$573.00



LFT SKID

GAS / DIESEL SKID

KEY SPECS

- Gas Power
- Electric Start*
- Belt Drive Pump
- 10 Gallon Gas & Diesel Tanks
- Stainless Steel Coil Wrap
- Thermostatic Burner Control
- Hour Meter
- 8.0 Max. GPM
- 4000 Max. PSI
- 43"L x 46"W x 57"H (Skid)
- 138"L x 66"W x 52"H (Trailer)

*Battery not included.

VALUE & OPTIONS

- 7-Year Pump Warranty
- Hose, Gun, Wand & Nozzle Included
- Optional Quick Coupler Socket
- Optional Chemical Injector Kit

MODEL NO.	ORDER NO.	GPM	PSI	DRIVE	HP	ENGINE	PUMP	BURNER	BTU/HR	SHIP WT (LBS)	LIST PRICE
LFT Skid 5.0/35	1.110-103.0	5.0	3500	Belt	18	Vanguard	T-Series	12V	410,710	676	\$10,500
LFT Skid 5.0/40	1.110-101.0	5.0	4000	Belt	25	Karcher V-Twin	T-Series	12V	410,710	688	\$9,950
LFT Skid 8.0/30	1.110-102.0	8.0	3000	Belt	25	Karcher V-Twin	X-Series	12V	400,000	690	\$11,550
LFT 3500E 5.0/35 Trailer	1.103-855.0	5.0	3500	Belt	21	Honda GX630	T-Series	12V	410,710	1,072	\$23,990

OPTIONS & ACCESSORIES		LIST PRICE
9.802-227.0	RL-56 Blue Gun and Wand (nozzle protector not included)	\$270.00
8.756-030.0	Foster Quick Coupler Socket, 1/4" Male Brass	\$11.40
8.925-245.0	Hose, 1/2" X 50' 2W 5000 PSI SW/SO/CPL	\$309.00
8.756-797.0	3-5 GPM Chemical Injector Kit	\$31.10

WARNING: Gas engine pressure washers can expose you to chemicals including Lead and Diisononyl Phthalate, which are known to the State of California to cause cancer, birth defects or other reproductive harm. For more information, visit www.P65Warnings.ca.gov.



HD GAS MINI SKID

GAS MINI SKID

KEY SPECS

- Gas Power
- Electric Start *
- Belt or Direct Drive Pump
- 10.0 Max. GPM
- 4000 Max. PSI
- 29.7"L x 17.8"W x 22.7"H (4/5 GPM)
- 35.1"L x 25.1"W x 24.1"H (8/10 GPM)

* Select models. Battery and fuel tank not included.

VALUE & OPTIONS

- ETL® Certified
- 7-Year Pump Warranty
- 4-Year Engine Warranty



MODEL NO.	ORDER NO.	GPM	PSI	DRIVE	START	ENGINE	CC	SHIP WT (LBS)	LIST PRICE
HD 4.0/40 Gt	1.107-475.0	4.0	4000	Direct	Recoil	Vanguard 14hp	400	140	\$1,925
HD 5.0/30 Gt	1.107-476.0	5.0	3000	Direct	Recoil	Vanguard 14hp	400	140	\$1,925
HD 4.0/40 GBt	1.107-477.0	4.0	4000	Belt	Recoil	Vanguard 14hp	400	160	\$2,245
HD 5.0/30 GBt	1.107-478.0	5.0	3000	Belt	Recoil	Vanguard 14hp	400	160	\$2,245
HD 8.0/35 GeBv*	1.107-413.0	8.0	3500	Belt	Electric	Honda GX 690	688	335	\$7,300
HD 8.0/35 GeBv*	1.107-460.0	8.0	3500	Belt	Electric	Kärcher 25hp	764	345	\$6,295
HD 10/30 GeBv*	1.107-449.0	10.0	3000	Belt	Electric	Kärcher 25hp	764	345	\$6,295

*Battery and fuel tank not included

WARNING: Gas engine pressure washers can expose you to chemicals including Lead and Diisononyl Phthalate, which are known to the State of California to cause cancer, birth defects or other reproductive harm. For more information, visit www.P65Warnings.ca.gov.



Landa Specials Department
Aurora, CO

LANDA[®] SPECIAL EQUIPMENT

SPECIAL EQUIPMENT

Landa supplements its standard line of hot and cold water pressure washers with an extensive offering of special models configured to meet a customer's unique needs. All specials fall under two categories:

PRICE LIST SPECIALS [NO QUOTE REQUIRED]

Most special applications can be satisfied by choosing from one of the Price List Special models shown in this section. All items may be ordered through any customer service representative and do not require a specials quote. Note that lead times for these items are listed in this price list and are subject to change with extended lead times.

These models allow you to add specially configured options to current standard Landa models. Pricing for these units is determined simply by taking the regular equipment price and adding the cost of the option. Some of the items in this price list are former standard models that were made "obsolete" due to lack of demand. The list price for these models may reflect the added costs associated with building a non-standard unit.

SPECIAL ORDERS [QUOTE REQUIRED]

Machine modifications that do not appear in this price list may also be requested. These Special Order machines fall into the category of true hybrid equipment. They are designed and built specifically to meet a customer's unique specifications.

Hybrid specials must go through a complete quote process. The quote will include administrative as well as labor and material costs, such as component costs, engineering time and materials, assembly labor, and order processing costs.

Please note that the mission of our Special Order department is to generate timely quotes and manufacture the highest quality in customized equipment. Please avoid using this department for the following:

- Changes to match bid specs on a competitor unit. (Invariably the cost of going through specials will negate the ability to compete on a bid against a competitor's standard model.)
- Remove features or components to lower your cost on the unit.
- Design wholly new equipment that is not currently in the Landa line, unless the quantity is sufficient to recover Landa's engineering costs.



Get a custom quote. Fast.

Log in to Infonet or scan the QR code on your mobile device. Once logged in, navigate to Sales / Special Request Form. Complete the form, providing as much detail as possible. We will respond to your request within 1 business day with a quote. In cases where the quote requires factors outside of our control, we will advise you of the exception and provide an ETA.

Unless otherwise stated, modified machines are not listed with ETL or ETLc certification standards.

PHW

HOT WATER, MOBILE, ELECTRIC-POWERED, DIESEL/OIL-HEATED

SERIES/MODEL	DESCRIPTION/VALUE ADDED	LIST PRICE
PHW5-30024H	4.8 GPM, 3000 PSI, 10 HP, 208V 3ph	\$13,510
PHW5-30024F	4.8 GPM, 3000 PSI, 10 HP, 575V 3ph	\$13,700



PGDC

HOT WATER, SKID MOUNTED, GASOLINE-POWERED, DIESEL/OIL-HEATED

SERIES/MODEL	DESCRIPTION/VALUE ADDED	LIST PRICE
PGDC5-35324E	4.7 GPM, 3500 PSI, 2400W generator	\$15,780
All models	Steam combination with pump-mounted valve	\$615
All models	Adjustable thermostat	\$615
All models	Hour meter	\$615



SDHW

HOT WATER, SKID MOUNTED, DIESEL-POWERED, DIESEL/OIL-HEATED

SERIES/MODEL	DESCRIPTION/VALUE ADDED	LIST PRICE
SDHW6-3500 (1.110-516.0)	5.2GPM, 3500 PSI, 26hp Kohler diesel engine, Black	\$35,615
SDHW6-3500 (1.110-560.0)	5.2GPM, 3500 PSI, 26hp Kohler diesel engine, Tan	\$35,615



VHP

HOT WATER, MOBILE, ELECTRIC-POWERED, LP GAS-HEATED

SERIES/MODEL	DESCRIPTION/VALUE ADDED	LIST PRICE
All models	Steam combination with pump-mounted valve	\$615
All models	Natural gas conversion	\$615
VHP3-20024B,C	2.5 GPM, 2000 PSI, 5 HP, 230/460V 3ph	\$11,200



EHW

HOT WATER, ELECTRIC-POWERED, ELECTRIC-HEATED

SERIES/MODEL	DESCRIPTION	LIST PRICE
All models	Auto start/stop conversion from time delay	\$475
All models	Float tank option	\$880
All models	LanCom wireless remote w/ auto start/stop upgrade, 1 wash cycle	\$1,800
All models	LanCom wireless remote w/ auto start/stop upgrade, 2 wash cycles	\$2,100
All models	Stainless steel exterior heater box upgrade	\$2,150
EHW4-20024B	4.2 GPM, 2000 PSI, 6.2 HP, 230V 3ph	\$18,200
EHW4-30024B	3.5 GPM, 3000 PSI, 7.5 HP, 230V 3ph	\$19,000
EHW (Heater Box Only)	40.5 KW, 460V 3ph	\$10,195
EHW (Heater Box Only)	40.5 KW, 575V 3ph	\$10,500



WARNING: Gas engine pressure washers can expose you to chemicals including Lead and Diisononyl Phthalate, which are known to the State of California to cause cancer, birth defects or other reproductive harm. For more information, visit www.P65Warnings.ca.gov.

Unless otherwise stated, modified machines are not listed with ETL or ETLc certification standards.

SEA

COLD WATER, STATIONARY, ELECTRIC-POWERED, BELT-DRIVE PUMP

SERIES/MODEL	DESCRIPTION	LIST PRICE
All models	Hour Meter	\$600
All models	LanCom wireless remote w/ auto start/stop upgrade, 1 wash cycle	\$1,815
All models	LanCom wireless remote w/ auto start/stop upgrade, 2 wash cycles	\$2,100
All models	LanCom wireless remote w/ float tank, 1 wash cycle, time delay	\$2,500
All models	LanCom wireless remote w/ float tank, 2 wash cycles, time delay	\$2,780
All models	LanCom wireless remote w/ float tank, 1 wash cycle, auto start/stop	\$2,620
All models	LanCom wireless remote w/ float tank, 2 wash cycles, auto start/stop	\$2,925
SEA4-20024F	3.5 GPM, 2000 PSI, 5 HP, 575V 3ph	\$6,950
SEA4-30024A *	3.5 GPM, 3000 PSI, 7.5 HP, 230V 1ph	\$7,500
SEA4-30024H	3.5 GPM, 3000 PSI, 7.5 HP, 208V 3ph	\$7,360
SEA4-30024F	3.5 GPM, 3000 PSI, 7.5 HP, 575V 3ph	\$7,360
SEA5-30024B, C	4.8 GPM, 3000 PSI, 10 HP, 230V / 460V 3ph	\$7,915
SEA5-30024H	4.8 GPM, 3000 PSI, 10 HP, 208V 3ph	\$7,915
SEA5-30024F	4.8 GPM, 3000 PSI, 10 HP, 575V 3ph	\$7,915

* GFCI not included



MP/MPE

COLD WATER, GASOLINE- OR ELECTRIC-POWERED

SERIES/MODEL	DESCRIPTION	LIST PRICE
MP-803000E	Model: 7.8 GPM, 3000 PSI, Landa pump	\$12,400
MP-102000E	Model: 10.6 GPM, 2000 PSI, Landa pump	\$12,400
MPE (5-5000 models)	Time delay shutdown or Auto Start-Stop option	\$1,240
MPE5-30024A	Model: 5.0 GPM, 3000 PSI, 10 HP, 230V 1ph, Landa pump	\$11,550
MPE5-50024H	Model: 5.0 GPM, 5000 PSI, 20 HP, 208V 3ph, Landa pump	\$13,580
MPE5-50024F	Model: 5.0 GPM, 5000 PSI, 20 HP, 575V 3ph, Landa pump	\$13,245
MPE8-30024B,C	Model: 7.8 GPM, 3000 PSI, 20 HP, 230/460V 3 ph, Landa pump	\$12,990
MPE10-20024B,C	Model: 10.6 GPM, 2000 PSI, 20 HP, 230/460V 3 ph, Landa pump	\$12,990



WARNING: Gas engine pressure washers can expose you to chemicals including Lead and Diisononyl Phthalate, which are known to the State of California to cause cancer, birth defects or other reproductive harm. For more information, visit www.P65Warnings.ca.gov.

Unless otherwise stated, modified machines are not listed with ETL or ETLc certification standards.

PE

COLD WATER, ELECTRIC-POWERED, BELT-DRIVE PUMP

SERIES/MODEL	DESCRIPTION	LIST PRICE
All PE models	Auto start/stop with shutdown	\$1,150
All PE models	Time-delay shutdown	\$1,150
PE4-20024G*	Model: 4.2 GPM, 2000 PSI, 6.2 HP, 208V 1ph	\$6,700
PE4-20024H	Model: 4.2 GPM, 2000 PSI, 6.2 HP, 208V 3ph	\$6,700
PE4-20024F	Model: 3.5 GPM, 2000 PSI, 5 HP, 575V 3ph	\$6,700
PE4-30024G *	Model: 3.5 GPM, 3000 PSI, 7.5 HP, 208V 1ph	\$7,120
PE4-30024H	Model: 3.5 GPM, 3000 PSI, 7.5 HP, 208V 3ph	\$7,120
PE4-30024F	Model: 3.5 GPM, 3000 PSI, 7.5 HP, 575V 3ph	\$7,120
PE5-30024A *	Model: 4.8 GPM, 3000 PSI, 10 HP, 230V 1ph (includes GFCI)	\$9,980
PE5-30024H	Model: 4.8 GPM, 3000 PSI, 10 HP, 208V 3ph	\$8,100
PE5-30024F	Model: 4.8 GPM, 3000 PSI, 10 HP, 575V 3ph	\$8,100

* GFCI not included



SPE/HIGH FLOW

COLD WATER, STATIONARY OR SKID, ELECTRIC-POWERED (SPE)

SERIES/MODEL	DESCRIPTION	LIST PRICE
SPE6-30024B,C	Model: 6.0 GPM, 3000 PSI, 15 HP, 230V / 460V 3 ph	\$11,050
SPE8-30024B,C	Model: 8.0 GPM, 3000 PSI, 20 HP, 230V / 460V 3 ph	\$12,070
SPE10-20024B,C	Model: 10 GPM, 2000 PSI, 15 HP, 230V / 460V 3 ph	\$11,700
SPE- All models	Auto start/stop with shutdown	\$1,240
SPE - All models	Time-delay shutdown	\$1,240



WARNING: Gas engine pressure washers can expose you to chemicals including Lead and Diisononyl Phthalate, which are known to the State of California to cause cancer, birth defects or other reproductive harm. For more information, visit www.P65Warnings.ca.gov.

Effective January 1, 2025. Prices, specifications and product descriptions subject to change without notice.

H2O Power Equipment
Denver, CO



LANDA[®] DETERGENTS

Why Choose Landa® Detergents?

Landa detergents are highly efficient, economical, and made with top-quality raw materials, allowing for low-dose use and cost savings. Our formulas enable quick separation of oil and water in separators, aiding in legal compliance, while being compatible with Landa pressure washers. These detergents also feature corrosion protection and other additives to ensure effective cleaning and machine care, with stability at high temperatures of up to 300°F.

Landa continuously improves its products to enhance performance, reduce contact times, and increase eco-friendliness. The company is committed to environmental responsibility by avoiding harmful substances like heavy metals and solvents, prioritizing operator and environmental safety. Their concentrated formulas reduce packaging waste, contributing to resource conservation.

Designed to meet high standards, many Landa detergents are food-grade, making them suitable for food production. They often include fragrances like lemon oil to combat odors and leave surfaces fresh. Landa offers a complete cleaning system, integrating machines, detergents, and accessories with expert support from a single source.

	Foam	Hardness
None	○○○○○	N/A
Low	●○○○○	■□□□□
Medium Low	●●○○○	■ ■ □ □ □ □
Medium	●●●○○	■ ■ ■ □ □ □
Medium High	●●●●○	■ ■ ■ ■ □ □
High	●●●●●	■ ■ ■ ■ ■ ■

Save Time and Boost Profits with Mix Kits.



Our Advanced Formula detergent Mix Kits offer savings by eliminating the need for hot water, **70% faster mixing time** and no messy powders. Scan the code for more information and detailed mixing instructions.

LANDA® MAGNIFICENT 7

Landa's Magnificent 7 detergents consistently show the **highest customer satisfaction** and **overall value**. Used with Landa pressure washers, these chemicals deliver **industry-leading results** in commercial fleet applications, distribution, construction, farming and agriculture. Find these detergents on the following pages marked with the blue Magnificent 7 icon to learn more.

1. TOUGHNESS

Toughness is a highly-concentrated detergent that tackles built-up oil and grease, while gentle enough for the fine finishes found on cars and in general cleaning.

2. SALT AND ICE REMOVER

Salt and Ice Melt Remover is a combination detergent that breaks down the crystalline structure of ice melt salt and prevents surface crystallization. Also effective in salt water environments.

3. ROADSHOW

Roadshow is a highly-concentrated detergent that tackles built-up oil and grease, while gentle enough for the fine finishes found on cars and in general cleaning.

4. DYNA-MIGHT

Dyna-Might is a highly concentrated formula designed to remove grease and dirt from fleet vehicles, engines, trucks, buses, tractors, and heavy equipment.

5. SUPER DYNA-MIGHT

Super Dyna-Might is an extra heavy-duty detergent for cutting through extra tough grease and dirt from heavy machinery, engines, off-road equipment and more.

6. FLEET ALUMINUM BRIGHTENER

Fleet Aluminum Brightener is an extra-strength, acid-based brightener designed for non-polished aluminum tanks, trailers, and wheels and for preparing aluminum for painting.

7. METAL PAINT AND PREP PHOSPHATIZER

Metal Paint and Prep Phosphatizer is a complete cleaning agent for the phosphatizing of iron and steel parts prior to painting. Effective in spray, dip and wipe-on applications.

GENERAL PURPOSE

TOUGHNESS

- Our best all-purpose cleaner and degreaser
- Effective on built-up oil and grease
- Gentle enough for fine finishes
- Ideal for stainless steel, aluminum, glass, concrete, plastic and painted surfaces
- Effective as pre-soak or pre-spray

- Advanced Formula
- Biodegradable
- Highly Concentrated
- Phosphate Free
- Kosher Certified



PH	COLOR	SCENT	DILUTION	FOAM	HARDNESS
12.1	RED/ORANGE	NO ADDED FRAGRANCE	1:150	●●●●●	■●●●●

SIZE/DESCRIPTION	ORDER NO.	FORM	WEIGHT (LBS)	LIST PRICE
6 Pail Super Concentrate Kit (makes 6, 5 gal pails)	8.931-967.0	Liquid-Liquid	48	\$416.00
Drum Super Concentrate Kit (makes 1, 55 gal drum)	8.931-968.0	Liquid-Liquid	84	\$608.00
9 Pak Super Concentrate Kit (makes 495 gals)	8.931-969.0	Liquid-Liquid	728	\$4,500.00
2 x 2.5 gal	8.759-267.0	Liquid	2484	\$112.00
5 gal	8.759-268.0	Liquid	46	\$94.00
55 gal	8.759-269.0	Liquid	492	\$715.00
275 gal (made-to-order)	8.759-270.0	Liquid	2484	\$3,561.00
Label, 50-Pack, Toughness Advanced Formula, 5 gal	8.759-271.0			\$129.00
Label, 50-Pack, Toughness Advanced Formula, 55 gal	8.759-272.0			\$129.00
Label, 10-Pack, Toughness Advanced Formula, 275 gal	8.760-083.0			\$28.00

GENERAL PURPOSE CLEANER

- Low foaming
- Formulated to pass through a pressure washer without damaging the high-pressure pump
- Ideal for home or shop, including exterior walls, decks, driveways, and roofs
- Effective in cleaning machinery, equipment, cars, RVs, and trucks
- Safe for indoors or outdoors

- Phosphate Free
- Kosher Certified



PH	COLOR	SCENT	DILUTION	FOAM	HARDNESS
10.2	PURPLE	SLIGHT	1:128	●○○○○	■●●●●

SIZE/DESCRIPTION	ORDER NO.	LIST PRICE
5 gal	8.719-145.0	\$89.50
55 gal	8.906-714.0	\$779.00

BUILDING INTERIOR/EXTERIOR CLEANER

- Safe to use on aluminum, stainless steel, glass, plastic, paint, stone and masonry surfaces
- Ideal for power washing around a home or shop, including exterior walls, decks, driveways, and roof
- Phosphate-free and outperforms most competitive phosphate products

- Phosphate Free
- Kosher Certified



PH	COLOR	SCENT	DILUTION	FOAM	HARDNESS
10.2	PURPLE	SLIGHT	1:130	●○○○○	■●●●●

SIZE/DESCRIPTION	ORDER NO.	LIST PRICE
5 gal	8.698-170.0	\$92.50
55 gal	8.698-171.0	\$740.00

CONCRETE CLEANER

- Formulated to clean stone and concrete surfaces
- Effective in removing oil, grease, baked-on carbon, tar and asphalt from unfinished concrete floors, walls and grout
- Formulated to pass through a pressure washer without damaging the high-pressure pump
- Safe to use on aluminum, stainless steel, glass, plastic and painted surfaces
- Phosphate-free and outperforms most competitive phosphate products

- Phosphate Free
- Kosher Certified



PH	COLOR	SCENT	DILUTION	FOAM	HARDNESS
12.3	YELLOW	CITRUS	1:150	●●●●●	■ ■ ■ ■ ■
SIZE/DESCRIPTION	ORDER NO.		LIST PRICE		
5 gal	8.720-068.0		\$159.00		
55 gal	8.720-069.0		\$1,560.00		

RM 99 SOLAR CLEANER

- Specific for cleaning solar and photovoltaic systems
- Highly efficient, gentle on surfaces, and removes stubborn and greasy stains
- Prevents the formation of limescale and maximizes the effectiveness of the system at minimum cost

- Phosphate Free
- Kosher Certified



PH	COLOR	SCENT	DILUTION	FOAM	HARDNESS
8.8	NONE	NONE	1:800	●○○○○	■ ■ ■ ■ □
SIZE/DESCRIPTION	ORDER NO.		LIST PRICE		
5 gal	8.698-094.0		\$155.00		

TRANSPORTATION

ROADSHOW

- Removes the toughest road grime on cars, trucks, buses, tractors, trailers, RVs and off-road equipment
- Extremely fast and effective removal of grease, oil, dirt, smoke trails and road film
- Excellent on oxidized paint and polished aluminum
- Effective as pre-soak or pre-spray

- Advanced Formula
- Biodegradable
- Highly Concentrated
- Phosphate Free
- Kosher Certified



PH	COLOR	SCENT	DILUTION	FOAM	HARDNESS
12.1	DARK RED	FRESH CITRUS MINT	1:150	●●●●●	■ ■ ■ ■ ■
SIZE/DESCRIPTION	ORDER NO.	FORM	WEIGHT (LBS)	LIST PRICE	
6 Pail Super Concentrate Kit (makes 6 x 5 gal pails)	8.931-700.0	Liquid-Liquid	48	\$425.00	
Drum Super Concentrate Kit (makes 1 x 55 gal drum)	8.931-702.0	Liquid-Liquid	84	\$615.00	
9 Pak Super Concentrate Kit (makes 495 gals)	8.931-701.0	Liquid-Liquid	728	\$4,550.50	
2 x 2.5 gal	8.759-895.0	Liquid	2484	\$114.00	
5 gal	8.759-896.0	Liquid	46	\$95.50	
55 gal	8.759-897.0	Liquid	492	\$756.00	
275 gal (made-to-order)	8.759-898.0	Liquid	2484	\$3,713.50	
Label, 50-Pack, Roadshow Advanced Formula, 5 gal	8.759-899.0			\$129.00	
Label, 50-Pack, Roadshow Advanced Formula, 55 gal	8.759-900.0			\$129.00	
Label, 10-Pack, Roadshow Advanced Formula, 275 gal	8.759-901.0			\$28.00	

ROADSHOW PLUS

- Wash and wax cars, trucks, buses, tractors, trailers, RVs and off-road equipment
- Extremely fast and effective removal of grease, oil, dirt, smoke trails and road film
- Special wax additive provides a durable shine, prevents dirt from adhering and protects against salt, air pollution and acid rain
- Excellent on oxidized paint and polished aluminum
- Easy to rinse and reduces water spotting
- Works well in cold water and even better with hot water

- Advanced Formula
- Biodegradable
- Highly Concentrated
- Phosphate Free
- Kosher Certified



PH	COLOR	SCENT	DILUTION	FOAM	HARDNESS
12.1	DARK RED	FRESH CITRUS MINT	1:150	●●●●●	■ ■ ■ ■ ■
SIZE/DESCRIPTION	ORDER NO.	FORM	WEIGHT (LBS)	LIST PRICE	
6 Pail Super Concentrate Kit (makes 6 x 5 gal pails)	8.931-703.0	Liquid-Liquid	48	\$440.00	
Drum Super Concentrate Kit (makes 1 x 55 gal drum)	8.931-705.0	Liquid-Liquid	84	\$627.50	
9 Pak Super Concentrate Kit (makes 495 gals)	8.931-704.0	Liquid-Liquid	728	\$4,640.00	
2 x 2.5 gal	8.759-908.0	Liquid	2484	\$116.50	
5 gal	8.759-909.0	Liquid	46	\$98.00	
55 gal	8.759-910.0	Liquid	492	\$766.00	
275 gal (made-to-order)	8.759-911.0	Liquid	2484	\$3,950.00	
Label, 50-Pack, Roadshow Plus Advanced Formula, 5 gal	8.759-912.0			\$129.00	
Label, 50-Pack, Roadshow Plus Advanced Formula, 55 gal	8.759-913.0			\$129.00	
Label, 10-Pack, Roadshow Plus Advanced Formula, 275 gal	8.759-914.0			\$28.00	

HIGHWAY

- Effective economical detergent that cleans cars, trucks, buses, tractors, trailers, RVs and off-the-road equipment
- Delivers a clean finish every time and contains ingredients to target road and environmental grime as well as grease and debris
- Safe on stainless steel, glass, oxidized paint and polished aluminum
- Effective as pre-soak or pre-spray
- Quick and free rinsing

- Advanced Formula
- Biodegradable
- Highly Concentrated
- Phosphate Free
- Kosher Certified



PH	COLOR	SCENT	DILUTION	FOAM	HARDNESS
12.2	RED	NO ADDED FRAGRANCE	1:80 - 1:100	●●●○○	■ ■ ■ □ □
SIZE/DESCRIPTION	ORDER NO.	FORM	WEIGHT (LBS)	LIST PRICE	
Drum Super Concentrate Kit (makes 1 x 55 gal drum)	8.933-547.0	Liquid-Liquid	52	\$290.00	
5 gal	8.760-318.0	Liquid	46	\$69.00	
55 gal	8.760-319.0	Liquid	491	\$485.00	
275 gal (made-to-order)	8.760-320.0	Liquid	2476	\$2,385.00	
Label, 50-Pack, Highway Advanced Formula, 5 gal	8.760-321.0			\$129.00	
Label, 50-Pack, Highway Advanced Formula, 55 gal	8.760-322.0			\$129.00	
Label, 10-Pack, Highway Advanced Formula, 275 gal	8.760-323.0			\$28.00	

VEHICLE WAX

- Long-lasting liquid wax creates a durable shine and prevents dirt from adhering to the surface
- Added protection against salt, air pollution and acid rain
- Can be used safely on virtually every surface, including aluminum, stainless steel, glass, plastic, paint and fine automotive paint finishes

- Phosphate Free
- Kosher Certified



PH	COLOR	SCENT	DILUTION	FOAM	HARDNESS
5.3	STRAW	MUSK	1:2000	○ ○ ○ ○ ○	■ □ □ □ □
SIZE/DESCRIPTION		ORDER NO.		LIST PRICE	
5 gal		8.907-394.0		\$233.00	

VEHICLE PRE-SOAK

- Used to remove stubborn soils like bugs, tar, oil and grease deposits on vehicles
- Apply before washing in order to penetrate and break up soils
- Soak longer for less scrubbing
- Safe to use on fine auto finishes and strong enough to work on transportation fleet vehicles

- Phosphate Free
- Kosher Certified



PH	COLOR	SCENT	DILUTION	FOAM	HARDNESS
12.8	BLUE	CITRUS	1:60	● ● ● ● ●	■ ■ ■ ■ □
SIZE/DESCRIPTION		ORDER NO.		LIST PRICE	
5 gal		8.698-223.0		\$155.00	
55 gal		8.698-224.0		\$1,495.00	

VEHICLE TIRE AND RIM CLEANER

- Fast and easy way to deep clean black rubber, road film and brake dust soils from tires and rims
- Simply spray, wait and rinse
- Should be used to clean tire and wheels before adding tire dressing
- Safe to use on all tires and steel and aluminum wheels, including coated wheels

- Phosphate Free
- Kosher Certified



PH	COLOR	SCENT	DILUTION	FOAM	HARDNESS
12.9	COLORLESS/CLEAR	DETERGENT	READY TO USE	● ● ● ● ●	■ ■ ■ □ □
SIZE/DESCRIPTION		ORDER NO.		LIST PRICE	
12 x 1 qt		8.698-226.0		\$131.00	

SALT AND ICE MELT REMOVER

- Combination detergent that removes heavy soil and damaging salt residue
- Unique chelating action breaks down the crystalline structure of ice melt salt and prevents crystallizing on the surface
- Easy rinsing
- Effective on fine automotive finishes as well as construction equipment, trucks and fleet vehicles

- Phosphate Free
- Kosher Certified



PH	COLOR	SCENT	DILUTION	FOAM	HARDNESS
13.4	DARK RED	SLIGHT	1:100	● ● ● ● ●	■ ■ ■ ■ ■
SIZE/DESCRIPTION		ORDER NO.		LIST PRICE	
5 gal		8.698-183.0		\$196.00	
55 gal		8.698-184.0		\$1,835.00	

QUICK RELEASE DETERGENT

- Concentrated heavy-duty vehicle wash
- Ideal for wash facilities servicing tractor trailers, heavy equipment, RVs, trucks, and autos
- Formulated to pass through a pressure washer without damaging the high-pressure pump
- Oil-water quick-release surfactant is ideally suited for water treatment systems

- Phosphate Free
- Kosher Certified



PH	COLOR	SCENT	DILUTION	FOAM	HARDNESS
12.8	NONE	SLIGHT	1:100	● ○ ○ ○ ○	■ ■ ■ ■ □

SIZE/DESCRIPTION	ORDER NO.	LIST PRICE
5 gal	8.720-037.0	\$109.00
55 gal	8.720-038.0	\$637.00

DEGREASERS

DYNA-MIGHT

- Designed to remove grease and dirt from heavy equipment, engines, trucks, buses, and tractors
- Also suitable for floors, buildings, concrete and walls
- Equally tackles petroleum, plant and animal-based grease and oil
- Rapidly penetrates and removes dirt, oil, grease and other soils
- Safe for use on metals and most surfaces when used as directed

- Advanced Formula
- Biodegradable
- Highly Concentrated
- Quick Rinsing
- Kosher Certified



PH	COLOR	SCENT	DILUTION	FOAM	HARDNESS
10.2	RED-ORANGE	NO FRAGRANCE ADDED	1:100	● ● ● ● ○	■ ■ ■ ■ ■

SIZE/DESCRIPTION	ORDER NO.	FORM	WEIGHT (LBS)	LIST PRICE
6 Pail Super Concentrate Kit (makes 6 x 5 gal pails)	8.929-875.0	Liquid-Liquid	48	\$445.00
Drum Super Concentrate Kit (makes 1 x 55 gal drum)	8.929-766.0	Liquid-Liquid	84	\$490.00
9 Pak Super Concentrate Kit (makes 495 gals)	8.929-767.0	Liquid-Liquid	728	\$3,699.00
2 x 2.5 gal	8.759-277.0	Liquid	2484	\$102.50
5 gal	8.759-278.0	Liquid	46	\$84.50
55 gal	8.759-279.0	Liquid	492	\$639.50
275 gal (made-to-order)	8.759-280.0	Liquid	2484	\$3,299.00
Label, 50-Pack, Dyna-Might Advanced Formula, 5 gal	8.759-281.0			\$129.00
Label, 50-Pack, Dyna-Might Advanced Formula, 55 gal	8.759-282.0			\$129.00

SUPER DYNA-MIGHT

- Big brother to Dyna-Might: Cuts extra tough grease & dirt from heavy machinery, engines and more
- Equally tackles extra challenging petroleum, plant and animal-based grease & oil
- Contains water-softening agents, alkaline builders, and rust and corrosion inhibitors
- Safe for use on metals and most surfaces when used as directed

- Advanced Formula
- Biodegradable
- Highly Concentrated
- Quick Rinsing
- Kosher Certified



PH	COLOR	SCENT	DILUTION	FOAM	HARDNESS
12.9	BLUE	NO FRAGRANCE ADDED	1:40	●●○○○	■ ■ ■ ■ ■
SIZE/DESCRIPTION	ORDER NO.	FORM	WEIGHT (LBS)	LIST PRICE	
6 Pail Super Concentrate Kit (makes 6 x 5 gal pails)	8.929-876.0	Liquid-Liquid	48	\$460.00	
Drum Super Concentrate Kit (makes 1 x 55 gal drum)	8.929-768.0	Liquid-Liquid	83	\$530.00	
9 Pak Super Concentrate Kit (makes 495 gals)	8.929-775.0	Liquid-Liquid	727	\$3,999.00	
2 x 2.5 gal	8.759-288.0	Liquid	46	\$106.00	
5 gal	8.759-289.0	Liquid	46	\$87.00	
55 gal	8.759-290.0	Liquid	491	\$678.00	
275 gal (made-to-order)	8.759-291.0	Liquid	2476	\$3,299.00	
Label, 50-Pack, Super Dyna-Might Advanced Formula, 5 gal	8.759-292.0			\$129.00	
Label, 50-Pack, Super Dyna-Might Advanced Formula, 55 gal	8.759-293.0			\$129.00	

HEAVY DUTY DEGREASER

- Industrial strength degreaser for cleaning heavy oils and greases, carbon, lubricants and hydraulic fluids found in industrial and manufacturing environments
- Formulated to pass through a pressure washer without damaging the high-pressure pump or heating coil
- Safe to use on aluminum, stainless steel, glass, plastic and concrete
- Phosphate-free and outperforms competitive phosphate formula products

- Phosphate Free
- Kosher Certified



PH	COLOR	SCENT	DILUTION	FOAM	HARDNESS
13.3	RED / ORANGE	NONE	1:128	●●●○○	■ ■ ■ ■ ■
SIZE/DESCRIPTION	ORDER NO.	LIST PRICE			
5 gal	8.907-304.0	\$138.00			
55 gal	8.907-306.0	\$1,205.00			

INDUSTRIAL GREASE AND CARBON REMOVER

- Heavy-duty degreaser that quickly penetrates and cleans grime, spent oil and grease in a variety of applications, including vehicles, equipment, RVs, drilling rigs, trucks and other structures
- Highly-concentrated blend formulated to wet, penetrate and suspend soil, oils and grease
- Safe to use indoors or outdoors on virtually every surface including aluminum, stainless steel, glass, plastic, and painted surfaces

- Phosphate Free
- Kosher Certified



PH	COLOR	SCENT	DILUTION	FOAM	HARDNESS
13.7	BLUE	NONE	1:100	●●●●●	■ ■ ■ ■ ■
SIZE/DESCRIPTION	ORDER NO.	LIST PRICE			
5 gal	8.906-942.0	\$110.00			
55 gal	8.906-949.0	\$969.00			

HEAVY EQUIPMENT DETERGENT

- Effective & safe detergent for any surface
- Excellent as a pre-spray for softening and breaking up dried on or baked on soils like mud, bugs, greasy film, diesel fuel, lubricants
- Excellent foaming capability
- Safe to use through a pressure washer
- Can be used on polished aluminum, stainless steel, glass, plastic, paint
- Phosphate-free and outperforms most competitive phosphate products

- Phosphate Free
- Kosher Certified



PH	COLOR	SCENT	DILUTION	FOAM	HARDNESS
12.9	GREEN	FRESH	1:150	●●●●●	■ ■ ■ ■ ■
SIZE/DESCRIPTION	ORDER NO.		LIST PRICE		
5 gal	8.698-189.0		\$114.00		
55 gal	8.698-190.0		\$1,045.00		

FLEET WASH SOLVENT DETERGENT

- Adds the cleaning properties of solvents to boost capability in removing heavy, petroleum-based soils
- Citrus-based solvent helps break down these tough soils for fast, efficient removal, saving time and energy
- Penetrates and breaks down baked-on hydrocarbon-based soils, like exhaust trails and carbonized grease
- Safe on most surfaces

- Phosphate Free
- Kosher Certified



PH	COLOR	SCENT	DILUTION	FOAM	HARDNESS
9.5	LIGHT YELLOW	CITRUS	1:50	●●●○○	■ □ □ □ □
SIZE/DESCRIPTION	ORDER NO.		LIST PRICE		
5 gal	8.913-772.0		\$276.00		
55 gal	8.913-773.0		\$2,760.00		

DEGREASERS - HIGH ALKALINITY / CAUSTIC

FLEET MACHINE AND HEAVY EQUIPMENT DEGREASER

- Extra-strong cleaner ideal for cleaning heavy equipment, over-the road vehicles and off road machinery
- Especially effective in cleaning exhaust stains, road grime and heavy deposits of dirt and oil
- Phosphate-free and outperforms competitive phosphate products
- Powerful formula not recommended for use on fine auto finishes, aluminum, magnesium and galvanized metal
- Aligns with the classic heavy duty brown degreaser and outperforms most

- Phosphate Free
- Kosher Certified



PH	COLOR	SCENT	DILUTION	FOAM	HARDNESS
13.3	BROWN	NONE	1:50	●●●●●	■ ■ ■ ■ ■
SIZE/DESCRIPTION	ORDER NO.		LIST PRICE		
5 gal	8.906-971.0		\$86.00		
55 gal	8.906-979.0		\$714.00		

DEGREASERS - FOOD PROCESSING / SERVICE**HOOD AND DUCT DEGREASER**

- Specially designed for use with a hot water pressure washer in restaurants and cooking establishments
- Fast, effective removal of dangerous grease build-up and carbonized grease in exhaust hoods
- Restores hood and ducts to a clean, safe result
- Can be used to pressure wash grills, fryers, broilers and ovens

- NSF Approved, Nonfood Compounds (A2)
- Phosphate Free
- Kosher Certified



PH	COLOR	SCENT	DILUTION	FOAM	HARDNESS
13.7	STRAW	SLIGHT	1:30	●●●○○	■ ■ ■ ■ □
SIZE/DESCRIPTION	ORDER NO.		LIST PRICE		
5 gal	8.698-205.0		\$125.00		
55 gal	8.698-206.0		\$1,165.00		

CHLORINATED DEGREASER

- Removes fats, oils and greases typically found in food service and food processing establishments
- Chlorinated formula breaks down stubborn protein soils that contribute to bio-film formation
- Safe on stainless steel, aluminum and painted surfaces

- NSF Approved, Nonfood Compounds (A1)
- Phosphate Free
- Kosher Certified



PH	COLOR	SCENT	DILUTION	FOAM	HARDNESS
12.3	NONE	SLIGHT CHLORINE	1:60	●●●●●	■ ■ ■ ■ □
SIZE/DESCRIPTION	ORDER NO.		LIST PRICE		
5 gal	8.698-203.0		\$82.00		
55 gal	8.698-204.0		\$655.00		

FLEET INTERIOR TANK CLEANER

- Highly concentrated and effective cleaner for the interiors of tanks and vessels
- May or may not be accessible for manual brushing/scraping
- Cuts through many layers of soil with high pressure washing and soaking, eliminating the need to enter the tank
- Extremely effective in removing the most difficult-to-clean oil, grease and hydrocarbon-based deposits
- Not for use on aluminum, magnesium, galvanized metal or fine painted surfaces
- Safe to use through a pressure washer; non-damaging to high-pressure pumps
- Phosphate-free and outperforms most competitive phosphate products

- NSF Approved, Nonfood Compounds (A2)
- Phosphate Free
- Kosher Certified



PH	COLOR	SCENT	DILUTION	FOAM	HARDNESS
13.7	STRAW	SLIGHT	1:30	●●●○○	■ ■ ■ ■ □
SIZE/DESCRIPTION	ORDER NO.		LIST PRICE		
5 gal	8.914-094.0		\$122.00		
55 gal	8.914-096.0		\$1,115.00		

ACIDIC CLEANERS

FLEET ALUMINUM BRIGHTENER

- Extra-strength, acid-based, aluminum cleaner and brightener
- Designed for non-polished aluminum tanks and trailers, aluminum wheels and preparing aluminum for painting
- Do NOT use on glass, polished aluminum or anodized aluminum
- Effective in removing grease, oils, baked-on carbon and diesel smoke

Kosher Certified



PH	COLOR	SCENT	DILUTION	FOAM	HARDNESS
< 1.0	STRAW	CITRUS	READY TO USE	●●●○○	■ ■ ■ ■ □

SIZE/DESCRIPTION	ORDER NO.	LIST PRICE
5 gal	8.907-711.0	\$123.00
55 gal	8.907-712.0	\$835.00

FLEET TRAILER CLEANER

- Concentrated, non-etching, acid-based detergent
- Formulated to quickly penetrate and remove grease, grime, dirt, road film and welding smut
- For use on polished aluminum and stainless steel surfaces
- Shines aluminum and stainless by removing oxidation

Kosher Certified



PH	COLOR	SCENT	DILUTION	FOAM	HARDNESS
1.1	STRAW	CITRUS	READY TO USE	●●●○○	■ ■ ■ ■ □

SIZE/DESCRIPTION	ORDER NO.	LIST PRICE
5 gal	8.698-174.0	\$129.00
55 gal	8.698-175.0	\$971.00

CONCRETE REMOVER

- Effectively removes concrete splatters and deposits from construction vehicles, equipment, tools and commercial surfaces
- Intended for "green" concrete removal (less effective on aged concrete)
- Not intended for use on fine automotive finishes
- Always pre-test undiluted product in an inconspicuous area to determine safety and suitability for intended use

Phosphate Free
 Kosher Certified



PH	COLOR	SCENT	DILUTION	FOAM	HARDNESS
2.2	YELLOW	SHARP	1:1	●○○○○	■ ■ ■ □ □

SIZE/DESCRIPTION	ORDER NO.	LIST PRICE
5 gal	8.698-181.0	\$235.00
55 gal	8.698-182.0	\$2,050.00

METAL PAINT AND PREP PHOSPHATIZER

- Complete and economical agent for the phosphatizing of iron and steel parts prior to painting
 - Effective in spray, dip and wipe-on applications
 - Works well in hard or soft water and rinses completely
- Kosher Certified



PH	COLOR	SCENT	DILUTION	FOAM	HARDNESS
3.1	NONE	DETERGENT SOLVENT	1:512	● ○ ○ ○ ○	■ ■ ■ ■ ■
SIZE/DESCRIPTION	ORDER NO.		LIST PRICE		
5 gal	8.914-472.0		\$136.00		
55 gal	8.914-484.0		\$1,230.00		

AUTOMATIC PARTS WASHERS**APW COMPLETE**

- Highly concentrated aqueous automatic parts washer detergent powder
 - Effective in cleaning heavy grease and oil buildup on parts made of ferrous metal
 - Contains corrosion inhibitors for protection against corrosion and flash rusting
 - Enhanced non-foaming formula assists with foam control in the parts washer sump
- Kosher Certified



PH	COLOR	SCENT	DILUTION	FOAM	HARDNESS
12.4	WHITE POWDER	NO FRAGRANCE ADDED	4 OZ / GAL	○ ○ ○ ○ ○	■ ■ ■ ■ ■
SIZE/DESCRIPTION	ORDER NO.		LIST PRICE		
40 lb	8.760-105.0		\$242.00		
450 lb	8.760-106.0		\$2,239.00		

APW SOFT ALLOY SHINE

- Powdered heavy duty aqueous automatic parts washer detergent
 - Specially formulated for use on softer materials such as brass, copper, stainless steel and plastics
 - Higher Alkaline solvent-based cleaning booster provides effective penetration and removal of difficult oil, grease and carbon-based soils while protecting softer materials
- Kosher Certified



PH	COLOR	SCENT	DILUTION	FOAM	HARDNESS
12.4	YELLOW	CITRUS	4 OZ / GAL	○ ○ ○ ○ ○	■ ■ ■ ■ ■
SIZE/DESCRIPTION	ORDER NO.		LIST PRICE		
40 lb	8.760-107.0		\$229.00		
450 lb	8.760-108.0		\$1,695.00		

DEFOAMER

- Fast-acting agent that suppresses foam build up in soak tanks and aqueous automatic parts washers
- High dilution ratio makes the cost-in-use very economical
- Compatible with most metals, painted or plastic pieces that can be cleaned in a parts washer
- Effective in hard or soft water
- Can be used with most phosphatizers

- Phosphate Free
- Kosher Certified



PH	COLOR	SCENT	DILUTION	FOAM	HARDNESS
8.2	OPAQUE WHITE	NONE	1 - 2 OZ / GAL	○ ○ ○ ○ ○	■ ■ ■ □ □
SIZE/DESCRIPTION	ORDER NO.		LIST PRICE		
4 x 1 gal	8.760-109.0		\$430.00		
55 gal	8.760-110.0		\$4,340.00		

VAPOR CORROSION INHIBITOR (VCI)

- Especially effective in inhibiting rust in automatic parts washers
- Contains a superior blend of corrosion inhibitors that give outstanding protection in both the liquid and vapor phase
- Prevents corrosion in automatic parts washers and on metal parts being cleaned

- Phosphate Free
- Kosher Certified



PH	COLOR	SCENT	DILUTION	FOAM	HARDNESS
10.5	CLEAR	SOLVENT	10 OZ / 25 GAL	○ ○ ○ ○ ○	■ ■ ■ □ □
SIZE/DESCRIPTION	ORDER NO.		LIST PRICE		
4 x 1 gal	8.760-111.0		\$189.00		
5 gal	8.760-112.0		\$214.00		
55 gal	8.760-113.0		\$1,775.00		

BUILDING CARE - HARD FLOOR

NEUTRAL FLOOR CLEANER

- Formulated for everyday floor cleaning of resilient tile, hard finished floors, polished stone and polished concrete floors
- No-rinse formula is designed to remove soil and leave a streak-free finish
- Developed for scrubber machines and contains ingredients to protect the machine from scale and contaminants

- Phosphate Free
- Kosher Certified



PH	COLOR	SCENT	DILUTION	FOAM	HARDNESS
7.9	LIGHT YELLOW	SOLVENT	1:128	● ○ ○ ○ ○	■ ■ ■ ■ □
SIZE/DESCRIPTION	ORDER NO.		LIST PRICE		
4 x 1 gal	8.698-209.0		\$105.00		
5 gal	8.698-210.0		\$115.00		
55 gal	8.698-211.0		\$1,085.00		

SHOP FLOOR CLEANER

- Formulated for heavy-duty cleaning of soils typically found in machine shop environments
- Lifts and removes petroleum-based grease and oily soils from all types of finished and unfinished concrete, including painted and epoxy-coated floors
- No-rinse formula is designed to remove soil and leave a streak-free finish
- Developed for scrubber machines and contains ingredients to protect the machine from scale and contaminants

- Phosphate Free
- Kosher Certified



PH	COLOR	SCENT	DILUTION	FOAM	HARDNESS
13.3	LIGHT RED, CLEAR	SOLVENT	1:128	● ○ ○ ○ ○	■ ■ ■ ■ ■
SIZE/DESCRIPTION	ORDER NO.		LIST PRICE		
5 gal	8.698-207.0		\$142.00		
55 gal	8.698-208.0		\$1,180.00		

WAREHOUSE FLOOR CLEANER

- Formulated for everyday warehouse concrete floor cleaning
- Use on finished or unfinished concrete
- Safe for polished concrete floors
- No-rinse formula is designed to remove dense concrete dust and leave a streak-free finish
- Developed for scrubber machines and contains ingredients to protect the machine from scale and contaminants

- Phosphate Free
- Kosher Certified



PH	COLOR	SCENT	DILUTION	FOAM	HARDNESS
12.9	BLUE	SOLVENT	1:128	● ● ● ○ ○	■ ■ ■ ■ ■
SIZE/DESCRIPTION	ORDER NO.		LIST PRICE		
5 gal	8.698-212.0		\$144.00		
55 gal	8.698-213.0		\$1,190.00		
275 gal	8.698-214.0		\$5,395.00		

TIRE MARK REMOVER AND PRE-SOAK

- Eliminates stubborn rubber marks quickly
- Ready-to-use, spray and wipe / pre-spray cleaner with synergistic solvent power
- Specifically formulated to remove rubber tire marks on floors and other hard surfaces
- Also removes greasy soils and marks on most washable surfaces
- Product labeling is Kärcher branded.

- Phosphate Free
- Kosher Certified



PH	COLOR	SCENT	DILUTION	FOAM	HARDNESS
12.0	CLEAR YELLOW	CITRUS	READY TO USE	● ○ ○ ○ ○	■ ■ ■ ■ ■
SIZE/DESCRIPTION	ORDER NO.		LIST PRICE		
12 x 1 qt	8.759-327.0		\$141.00		
4 x 1 gal	8.759-326.0		\$140.00		
55 gal	8.759-325.0		\$1,339.00		

ICE BREAKER FREEZER CLEANER

- Fast-acting, highly efficient cleaner & degreaser specially formulated for cleaning frozen food and cold storage areas where conventional products would freeze
- Penetrates, dissolves and suspends dirt, grime, fats and grease while freezer equipment is still operating
- Safe on cleaning concrete, quarry tile, ceramic and metal surfaces
- Product labeling is Kärcher branded.

- Phosphate Free
- Kosher Certified



PH	COLOR	SCENT	DILUTION	FOAM	HARDNESS	
11.9	CLEAR BLUE	NONE	READY TO USE	● ○ ○ ○ ○	■ ■ ■ ■ ■	
SIZE/DESCRIPTION	ORDER NO.		LIST PRICE			
4 x 1 gal	8.759-330.0		\$149.00			
5 gal	8.759-329.0		\$159.00			
55 gal	8.759-328.0		\$1,536.00			

BUILDING CARE - SOFT FLOOR

RED CARPET EXTRACTION CLEANER

- Professional liquid extraction agent for residential and commercial carpet and upholstery cleaning
- Encapsulates soils and flushes pre-spray clean
- Product labeling is Kärcher branded.

- Phosphate Free
- Kosher Certified



PH	COLOR	SCENT	DILUTION	FOAM	HARDNESS	
11.5	BRIGHT BLUE	CITRUS	1:128	● ○ ○ ○ ○	■ ■ ■ ■ ■	
SIZE/DESCRIPTION	ORDER NO.		LIST PRICE			
4 x 1 gal	8.695-210.0		\$115.00			

RED CARPET SUPER PRE-SPRAY

- Professional pre-spray formulated with a gentle but powerful blend of solvents, surfactants and other specialty materials
- Designed to outperform all other fine fabric cleaning products
- Product labeling is Kärcher branded.

- Kosher Certified



PH	COLOR	SCENT	DILUTION	FOAM	HARDNESS	
10.2	BLUE GREEN	CITRUS	1:16	● ● ● ○ ○	■ ■ ■ ■ ■	
SIZE/DESCRIPTION	ORDER NO.		LIST PRICE			
4 x 1 gal	8.695-207.0		\$210.00			

RED CARPET SUPER CONDITIONING RINSE

- Professional multi-purpose acidic extraction rinse
- Removes soils and pre-spray residues that others leave behind
- Safe organic acids neutralize alkalinity
- Concentrated
- Product labeling is Kärcher branded.

- Phosphate Free
- Kosher Certified



PH	COLOR	SCENT	DILUTION	FOAM	HARDNESS
2.2	GREEN	CITRUS	1:128	● ○ ○ ○ ○	■ ■ ■ ■ ■
SIZE/DESCRIPTION	ORDER NO.			LIST PRICE	
4 x 1 gal	8.695-209.0			\$130.00	

RED CARPET WOOL & NATURAL FIBER CLEANER

- Professional strength formula with neutral pH and gentle cleansers
- Safe to use on cotton, wool and synthetic fibers
- Concentrated
- Product labeling is Kärcher branded.

- Kosher Certified



PH	COLOR	SCENT	DILUTION	FOAM	HARDNESS
8.0	SLATE BLUE	CITRUS	1:128	● ○ ○ ○ ○	■ ■ ■ ■ ■
SIZE/DESCRIPTION	ORDER NO.			LIST PRICE	
4 x 1 gal	8.695-211.0			\$115.00	

RED CARPET EXPERT ALL-N-1 CARPET CLEANER

- Provides everything you need in one convenient formula
- Cleans carpets, removes spots and deodorizes all in one step
- Concentrated
- Product labeling is Kärcher branded.

- Kosher Certified



PH	COLOR	SCENT	DILUTION	FOAM	HARDNESS
8.8	BLUE	FRESH	1:64	● ○ ○ ○ ○	■ ■ ■ ■ ■
SIZE/DESCRIPTION	ORDER NO.			LIST PRICE	
12 x 1 qt	8.695-229.0			\$139.00	
4 x 1 gal	8.695-230.0			\$105.00	

RED CARPET LIQUID DEFOAMER

- Unique blend of foam-reducing agents
- Instantly decreases foam levels in hoses and waste tanks
- Product labeling is Kärcher branded.

- Kosher Certified



PH	COLOR	SCENT	DILUTION	FOAM	HARDNESS
7.0	WHITE	NONE	1:128	○ ○ ○ ○ ○	■ □ □ □ □
SIZE/DESCRIPTION	ORDER NO.			LIST PRICE	
4 x 1 gal	8.695-213.0			\$160.00	

RED CARPET ENZYME DEODORIZER

- Professional level deodorizer that contains a premium blend of enzymes to break down odors and the source of odors associated with feces, urine, vomit, sweat, and pet odors
- Product labeling is Kärcher branded.

Kosher Certified



PH	COLOR	SCENT	DILUTION	FOAM	HARDNESS
8.5	AMBER	CITRUS	1:4	● ○ ○ ○ ○	■ ■ □ □ □
SIZE/DESCRIPTION	ORDER NO.		LIST PRICE		
4 x 1 gal	8.695-218.0		\$200.00		

RED CARPET ODOR NEUTRALIZER

- Professional strength deodorizer
- Can be used on small to large clean-up incidents
- Suitable for restoration and remediation efforts
- Product labeling is Kärcher branded.

Phosphate Free
 Kosher Certified



PH	COLOR	SCENT	DILUTION	FOAM	HARDNESS
7.6	CLEAR	FLORAL	1:128	● ● ● ○ ○	■ ■ ■ □ □
SIZE/DESCRIPTION	ORDER NO.		LIST PRICE		
4 x 1 gal	8.695-219.0		\$133.00		

RED CARPET PRO SPOTTER

- Professional ready-to-use all-purpose water-based spotting agent
- Can be used on almost all synthetic and natural fiber carpets, area rugs, upholstery, and fine fabrics
- Product labeling is Kärcher-branded.

Phosphate Free
 Kosher Certified



PH	COLOR	SCENT	DILUTION	FOAM	HARDNESS
7.1	CLEAR	NONE	1:1	● ● ● ○ ○	■ ■ ■ ■ ■
SIZE/DESCRIPTION	ORDER NO.		LIST PRICE		
12 x 1 qt	8.695-222.0		\$170.00		

ICAPSOL OA - ENCAPSULATING INTERIM CLEANING CHEMICAL

- Low moisture carpet cleaner. Product labeling is Kärcher-branded.

Phosphate Free
 Kosher Certified



PH	COLOR	SCENT	DILUTION	FOAM	HARDNESS
7.9	OPAQUE WHITE-AMBER	FLORAL	1:16	● ○ ○ ○ ○	■ ■ ■ □ □
SIZE/DESCRIPTION	ORDER NO.		LIST PRICE		
12 x 1 pt	8.760-134.0		\$125.00		
4 x 1 gal	8.760-135.0		\$200.00		
5 gal	8.760-136.0		\$230.00		

ICAPSOL - ENCAPSULATING INTERIM CLEANING CHEMICAL

Low moisture carpet cleaner. Product labeling is Kärcher-branded.

Kosher Certified



PH	COLOR	SCENT	DILUTION	FOAM	HARDNESS	
7.2	CLEAR LIGHT YELLOW	ACRYLIC	1:16	● ○ ○ ○ ○	■ ■ ■ □ □	
SIZE/DESCRIPTION	ORDER NO.		LIST PRICE			
12 x 1 pt	8.695-469.0		\$133.00			
4 x 1 gal	8.695-226.0		\$190.00			

ICAPSOL - ENCAPSULATING CLEANING CHEMICAL WITH CARPET PROTECTION

Low moisture carpet cleaner with stain protection for easier next time cleaning. Product labeling is Kärcher-branded.

Kosher Certified



PH	COLOR	SCENT	DILUTION	FOAM	HARDNESS	
6.5 - 7.5	CLEAR AMBER	ACRYLIC	1:16	● ○ ○ ○ ○	■ ■ ■ □ □	
SIZE/DESCRIPTION	ORDER NO.		LIST PRICE			
12 x 1 pt	8.695-470.0		\$140.00			
4 x 1 gal	8.695-227.0		\$202.00			
5 gal	8.695-643.0		\$245.00			

DISINFECTANTS & SANITIZERS

VITAL OXIDE

Vital Oxide is an EPA registered disinfectant and sanitizer with the following key attributes: Disinfection, Sanitizing, Odor Elimination, Carpet Sanitization, Allergen Removal, Kills Mold and Mildew, Parvo, Distemper, and Tuberculous. Sanitizer dilution is NSF approved as a no rinse sanitizer for non-porous food contact surfaces. Protect from freezing. (US Only).

Phosphate Free
 Kosher Certified



PH	COLOR	SCENT	DILUTION	FOAM	HARDNESS	
8.0 - 9.0	CLEAR	NONE	DISINFECTION - RTU CARPET - 5:1 SANITIZING - 9:1	● ● ● ○ ○	■ ■ ■ □ □	
SIZE/DESCRIPTION	ORDER NO.		LIST PRICE			
6 x 32 oz	8.639-560.0		\$97.00			
4 x 1 gal	8.639-558.0		\$200.00			
5 gal	8.644-292.0		\$245.00			
15 gal	8.642-823.0		\$549.00			
55 gal	8.698-112.0		\$1,869.00			
12 x 3 oz	8.759-565.0		\$120.00			
Vital Oxide Secondary Label, 3" x 3", RTU	8.644-439.0		\$0.65			
Vital Oxide Secondary Label, 3" x 3", 5:1	8.642-868.0		\$0.65			
Vital Oxide Secondary Label, 3" x 3", 9:1	8.642-869.0		\$0.65			

HARD SURFACE CLEANERS

COMPASS™ CLEAN

Professional grade alkaline formula for hard surface cleaning. Designed for use with Kacher AP 100/50 M multi-purpose facility cleaning machine. Product labeling is Kärcher-branded.

- Phosphate Free
- Kosher Certified



PH	COLOR	SCENT	DILUTION	FOAM	HARDNESS
13.6	ORANGE	NONE	RTU	● ○ ○ ○ ○	■ ■ ■ □ □
SIZE/DESCRIPTION	ORDER NO.		LIST PRICE		
4 x 1 gal	8.695-241.0		\$130.00		

COMPASS™ SHINE

Professional grade mild acid formula for hard surface cleaning in commercial bathroom settings. Designed for use with Kacher AP 100/50 M multi-purpose facility cleaning machine. Product labeling is Kärcher-branded.

- Kosher Certified



PH	COLOR	SCENT	DILUTION	FOAM	HARDNESS
1.0	DARK GREEN	WINTERGREEN	RTU	● ● ● ○ ○	■ ■ ■ ■ ■
SIZE/DESCRIPTION	ORDER NO.		LIST PRICE		
4 x 1 gal	8.695-242.0		\$160.00		

COMPASS™ RINSE

Professional grade rinse-aid that ensures spot-free drying. Designed for use with Kacher AP 100/50 M multi-purpose, facility cleaning machine. Product labeling is Kärcher-branded.

- Phosphate Free
- Kosher Certified



PH	COLOR	SCENT	DILUTION	FOAM	HARDNESS
3.9	CLEAR	NONE	1:2560	● ○ ○ ○ ○	■ ■ ■ ■ ■
SIZE/DESCRIPTION	ORDER NO.		LIST PRICE		
12 x 1 qt	8.695-243.0		\$160.00		

GUM REMOVER DETERGENT

Professional grade rinse-aid that ensures spot-free drying. Designed for use with Kacher AP 100/50 M multi-purpose, facility cleaning machine. Product labeling is Kärcher-branded.

- Phosphate Free
- Kosher Certified

PH	COLOR	SCENT	DILUTION	FOAM	HARDNESS
3.9	CLEAR	NONE	1:2560	● ○ ○ ○ ○	■ ■ ■ ■ ■
SIZE/DESCRIPTION	ORDER NO.		LIST PRICE		
12 x 1 qt	8.638-579.0		\$505.00		
SG1 24 liters of gum remover solution	8.638-580.0		\$722.00		
SG1 Service Pack: 2 LPG cartridges, 4 bottles of solution and 2 black stainless steel brushes, 1 green brush	8.639-871.0		\$240.00		

PRESSURE WASHER MAINTENANCE**COIL DESCALER**

- Quickly and safely removes hard water scale build up that robs the performance of your pressure washer
- Removing the build-up improves the water flow, heat transfer while reducing strain on the pump

- Phosphate Free
- Kosher Certified



PH	COLOR	SCENT	DILUTION	FOAM	HARDNESS
1.0	WHITE	SLIGHT SOLVENT	1:16	●●●●●	■ ■ ■ ■ ■
SIZE/DESCRIPTION	ORDER NO.		LIST PRICE		
12 x 2 lb	8.914-296.0		\$436.00		
1 x 8 lb	8.759-763.0		\$160.00		

PUMP AND COIL PROTECTANT

- Multi-component product made from heat-resistant organic and inorganic salts
- Works by inhibiting the formation and growth of mineral deposits
- Proprietary to machines that have a built in dispenser for this product
- Keeps your machine running efficiently with optimum performance and reliability
- Product labeling is Kärcher branded.

- Phosphate Free
- Kosher Certified



PH	COLOR	SCENT	DILUTION	FOAM	HARDNESS
7.3	AMBER	NONE	READY TO USE	○ ○ ○ ○ ○	■ ■ ■ ■ ■
SIZE/DESCRIPTION	ORDER NO.		LIST PRICE		
12 x 1 qt	8.698-058.0		\$136.00		
4 x 1 gal	9.556-111.0		\$102.00		
5 gal	9.556-011.0		\$92.00		

PUMP AND COIL PROTECTANT CONCENTRATE

- Multi-component product made from heat-resistant organic and inorganic salts
- Works by inhibiting the formation and growth of mineral deposits
- Proprietary to machines that have a built in dispenser for this product
- Keeps your machine running efficiently with optimum performance and reliability
- Product labeling is Kärcher branded.

- Phosphate Free
- Kosher Certified



PH	COLOR	SCENT	DILUTION	FOAM	HARDNESS
7.6	LIGHT BROWN	NONE	1:10	○ ○ ○ ○ ○	■ ■ ■ ■ ■
SIZE/DESCRIPTION	ORDER NO.		LIST PRICE		
5 gal	9.556-010.0		\$235.00		

DETERGENT ACCESSORIES

DESCRIPTION	SIZE	ORDER NO.	LIST PRICE
Landa Pail / Lid Combo, Yellow	5 gal	8.929-774.0	\$27.50
Landa Pail / Lid Combo, White	5 gal	9.846-058.0	\$27.00
Label, Landa, Secondary Blank/Write-In		8.642-713.0	\$3.50
Label, Liquid Warning	50-Pack	8.765-847.0	\$129.00
Label, UN1760 Corrosive Liquids, Sodium Hydroxide, 8, II	50-Pack	8.759-964.0	\$129.00
Label, UN1760 Corrosive Liquids, Sodium Metasilicate, 8, II	50-Pack	8.759-965.0	\$129.00
Label, UN1719 Caustic Alkali Liquids, Sodium Hydroxide, Sodium Metasilicate, 8, II	50-Pack	8.759-966.0	\$129.00
2-Gallon Pump Sprayer with Wand		8.628-441.0	\$126.00
Disposable Siphon Pail Pump	5 gal	8.704-694.0	\$13.90
Disposable Siphon Drum Pump	15, 30, 55 gal	8.704-696.0	\$28.50
Disposable Heavy Duty Siphon Drum Pump	15, 30, 55 gal	8.704-698.0	\$39.70
Drum / Tank Pump, Crank Type, Polypropylene (Standard)		8.704-700.0	\$258.00
Drum / Tank Pump, Crank Type, Ryton (Deluxe)		8.704-701.0	\$377.00
Replacement Handle for Crank Type Drum / Tank Pump		8.700-526.0	\$15.80
Bung Wrench 2" and 3/4" Plug		8.712-534.0	\$42.60
5-Gal Pail Lid Opener		8.704-689.0	\$29.90
Drum Faucet 3/4" Bung Size, Natural		8.704-692.0	\$7.15
pH Test Strips	100-Pack	8.753-577.0	\$72.50
Flow Meter, .6-5 GPH, Brass, No Metering Valve		8.710-097.0	\$120.00
Flow Meter, 2-10 GPH, Brass, No Metering Valve		8.710-101.0	\$135.00
Flow Meter, 2-10 GPH, Brass, Metering Valve		8.710-102.0	\$155.00
Flow Meter, .6-5 GPH, Stainless Steel, No Metering Valve		8.710-099.0	\$169.00
Flow Meter, .6-5 GPH, Stainless Steel, Metering Valve		8.710-100.0	\$213.00
Flow Meter, 2-10 GPH, Stainless Steel, No Metering Valve		8.710-104.0	\$142.00
Flow Meter, 2-10 GPH, Stainless Steel, Metering Valve		8.710-105.0	\$207.00



**LANDA® PARTS
& ACCESSORIES**

WATER JET SURFACE CLEANER

The Landa Water Jet is the top industrial surface cleaner, known for easy handling, fast cleaning, and durability in tough conditions. Its adjustable spray bar spins at 2,000 RPM, strong enough for concrete but gentle on asphalt and wood. Built with stainless steel and sealed bearings, it requires minimal maintenance. A holster-mounted trigger gun and insulated wand allow for convenient spot cleaning.

- Attaches to Any Hot or Cold Water Pressure Washer
- Rated for Heavy, Super-Duty Use
- 2000 Min. PSI
- 4000 Max. PSI
- 200°F Max. Temp
- 20" Cleaning Path
- Durable, Rust-Free Polyethylene
- Weight: 45 lbs
- Pneumatic Tires on Steel Wheels
- Easy-to-Clean, In-Line Filter Prevents Nozzle Plugging
- Auto Switching between Surface Cleaner and Holster-Mounted Wand
- Collapsible Handle for Easy Transporting



ORDER NO.	DESCRIPTION	LIST PRICE
8.903-606.0	Water Jet Surface Cleaner	\$3,130.00
8.707-011.0	Rotary Union	\$1,040.00
8.718-244.0	Actuator Valve Assembly	\$85.50
8.722-172.0	Repair Kit, Actuator Valve	\$18.00
8.711-289.0	8" SS Spray Bar	\$52.00

CYCLONE SURFACE CLEANER

The Landa Cyclone economy flat surface cleaner offers a cost-effective alternative to the popular Water Jet model, sharing many key features. Its non-adjustable spray bar spins at 2,000 RPM, gliding smoothly on pneumatic tires and a swivel caster. Made of stainless steel with medium-duty sealed bearings, it's ideal for cleaning warehouse floors, sidewalks, pool decks, parking lots, and more.

- Attaches to Any Hot or Cold Water Pressure Washer
- Rated for Medium-Duty Use
- Durable, rust-free polyethylene spray housing
- Fatigue-Free Trigger Handle Powers On/Off
- Collapsible handle for convenient storage



ORDER NO.	DESCRIPTION	LIST PRICE
8.903-608.0	Cyclone Surface Cleaner	\$1,875.00
8.751-358.0	Rotary Union (current style)	\$444.00
8.707-006.0	Rotary Union (old style)	\$266.00

NEW LANDA TRIGGER GUN

Designed exclusively for Landa to meet the demands of the high pressure cleaning professional.

- PSI: 4350
- GPM: 10.5
- Temperature: 311°F
- 3/8" FPT inlet x 1/4" FPT outlet
- Weight: 20 oz

ORDER NO.	DESCRIPTION	LIST PRICE
4.760-846.0	Landa Classic Trigger Gun	\$59.00
9.751-499.0	Repair Kit	\$26.50
8.760-440.0	Landa Label for New Classic Trigger Gun	\$4.75



Standard labeling



With brand label (8.760-440.0)

LANDA CLASSIC TRIGGER GUN

Designed exclusively for Landa to meet the demands of the high pressure cleaning professional.

- PSI: 5000
- GPM: 10.5
- Temperature: 320°F
- 3/8" FPT inlet x 1/4" FPT outlet
- Weight: 20 oz

ORDER NO.	DESCRIPTION	LIST PRICE
8.751-234.0	Landa Classic Trigger Gun	\$59.00
8.751-119.0	Repair Kit	\$26.90



SAVE 23%
ORDER IN QTYS OF 50

VARIABLE PRESSURE LANCE

The Landa Stainless Steel Variable Pressure Lance simply out-classes the competition. 41" length to meet ETL standards and 1/4" stainless steel tubes provide superior look and durability. Designed specifically for Landa to our specifications.



ORDER NO.	DESCRIPTION	LIST PRICE
8.711-308.0	Stainless Steel with Coupler	\$111.00
8.710-722.0	Stainless Steel Lance Only	\$120.00
8.711-293.0	Zinc Plated with Coupler	\$96.00
9.803-267.0	Repair Kit	\$77.00

- PSI: 4000
- 1/4" stainless or zinc plated tubes
- Fully insulated
- Brass valve body and stainless steel valve bushing

COLD WATER LANCE

Made of 304 stainless steel for long lasting durability. This 31" lance also has a highly visible yellow safety cover and coupler.

- High visibility yellow protective cover
- Stainless steel 1/4" pipe



ORDER NO.	DESCRIPTION	LIST PRICE
8.904-430.0	31" Covered with Coupler	\$72.50
8.904-437.0	42" Stainless Steel with Coupler	\$52.00
8.711-290.0	72" Stainless Steel	\$48.90

INSULATED LANCE

Superior heat protection with stainless steel tube construction. Available in stainless steel and zinc plated with vented grips or with molded plastic grip as shown below.

- 35.5" lance with vented grip and coupler (SS shown)
- Vented insulated grip



ORDER NO.	DESCRIPTION	LIST PRICE
9.803-805.0	35.5" Lance with Coupler, SS	\$53.00
8.904-439.0	72" Lance with Coupler, Zinc Plated	\$135.00

HIGH-PRESSURE HOSES

The Landa hose is built to exceed the EN1829-2 Standard and will provide superior abrasion resistance that will increase the life of the hose. The Landa hose is rated up to 250°F and is available in 4000 and 6000 PSI.

Both single-and double-wire braid hoses come with durable bend restrictors on both ends, with a 24-inch bend restrictor on the gun end for added operator protection against high-pressure bursts.

The Landa hose has a "bite-the-wire" coupling that grips the hose better than any other design.



- **Temperature Rating:** Rated for continuous temperatures up to 250°F.
- **Easily Identified:** Permanently embossed identification makes for easy tracing and owner protection.
- **Certified Burst Protection:** Landa hoses meet the stringent UL-1776 safety standards with two hose guards—including a 24-inch sleeve on the gun end—for added operator protection against bursts.
- **Unique Coupling:** A "bite-the-wire" coupling actually reaches the wire braid for never-slip retention, far superior to the "compression" fittings used on conventional hoses.



25' x 3/8"



50' x 3/8"



75' x 3/8"



100' x 3/8"



150' x 3/8"



200' x 3/8"

4,000 PSI HOSE

- Landa branded black bend restrictor at both ends
- Smooth impression, oil-resistant tube and cover
- Rated to 250°F



ORDER NO.	SIZE	TEMP	PSI	LIST PRICE
3/8" MPT Swivel x 3/8" MPT Solid, 3/8" ID				
8.925-149.0	25' x 3/8" ID	250°F	4000	\$75.00
8.925-155.0	50' x 3/8" ID	250°F	4000	\$124.00
8.925-160.0	75' x 3/8" ID	250°F	4000	\$176.00
8.925-164.0	100' x 3/8" ID	250°F	4000	\$229.00
8.925-169.0	150' x 3/8" ID	250°F	4000	\$332.00
8.925-351.0	200' x 3/8" ID	250°F	4000	\$443.00
8.925-376.0	Case of 75 3/8" x 50' (8.925-155.0)			\$9,210.00
8.925-445.0	Case of 40 3/8" x 100' (8.925-164.0)			\$9,125.00

6,000 PSI HOSE

- Upgraded hose material is **50% more flexible** and up to **32% lighter** than traditional 6,000 PSI hoses.
- Landa branded yellow bend restrictor at both ends
- Smooth impression, oil-resistant tube and cover
- Rated to 250°F



ORDER NO.	SIZE	TEMP	PSI	LIST PRICE
3/8" MPT Swivel x 3/8" MPT Solid, 3/8" ID				
8.925-179.0	25' x 3/8" ID	250°F	6000	\$87.50
8.925-183.0	50' x 3/8" ID	250°F	6000	\$167.00
8.925-224.0	75' x 3/8" ID	250°F	6000	\$227.00
8.925-228.0	100' x 3/8" ID	250°F	6000	\$299.00
8.925-231.0	150' x 3/8" ID	250°F	6000	\$404.00
8.925-370.0	200' x 3/8" ID	250°F	6000	\$596.00
8.925-380.0	Case of 75 3/8" x 50' (8.925-155.0)			\$11,960.00
8.925-446.0	Case of 40 3/8" x 100' (8.925-228.0)			\$11,700.00
3/8" MPT Swivel x 3/8" MPT Solid, 1/2" ID				
8.925-243.0	50' x 1/2" ID	250°F	5000	\$261.00
8.925-252.0	100' x 1/2" ID	250°F	5000	\$506.00

COUPLERS



ORDER NO.	DESCRIPTION	LIST PRICE
9.114-622.0	FPT 1/4" Stainless Steel Coupler	\$10.70
9.114-624.0	FPT 3/8" Stainless Steel Coupler	\$12.60
9.114-621.0	MPT 1/4" Stainless Steel Coupler	\$10.70
9.114-623.0	MPT 3/8" Stainless Steel Coupler	\$12.60

ORDER NO.	DESCRIPTION	LIST PRICE
9.114-618.0	FPT 1/4" Brass Coupler	\$7.85
9.114-620.0	FPT 3/8" Brass Coupler	\$9.50
9.114-617.0	MPT 1/4" Brass Coupler	\$8.00
9.114-619.0	MPT 3/8" Brass Coupler	\$9.50

HOSE REELS

Fully-assembled and ready to use! Landa hose reels were designed for ease of use and durability in commercial pressure washer applications. Offering 100' and 200' reels in both a fixed base and 360 degree rotating base. The oversized reel holds the advertised length plus leaves additional space reducing the difficulty of reeling hose. The unique extended swivel improves the hose connection and reduces hose wear and stress.

- Max. 5000 PSI, 325°F
- 100'- and 200'-fixed base
- 100'- and 200'-360° rotating base
- High-pressure, double-seal swivels
- Designed for 3/8" hose
- Convertible to 1/2" hose with change to 1/2" swivel
- 2-year warranty

360° Pivot Hose Reel

Fixed Base Hose Reel



ORDER NO.	DESCRIPTION	LIST PRICE
8.750-487.0	360° Pivot Hose Reel - 100' x 3/8"	\$497.00
8.750-484.0	360° Pivot Hose Reel - 200' x 3/8"	\$557.00
8.750-477.0	Fixed Base Hose Reel - 100' x 3/8"	\$386.00
8.750-480.0	Fixed Base Hose Reel - 200' x 3/8"	\$405.00

Note: Hose not included

Bracket Sockets



Universal Mount Skid Mount Wall Mount Base Mount

Fixed Base Hose Reel Brackets



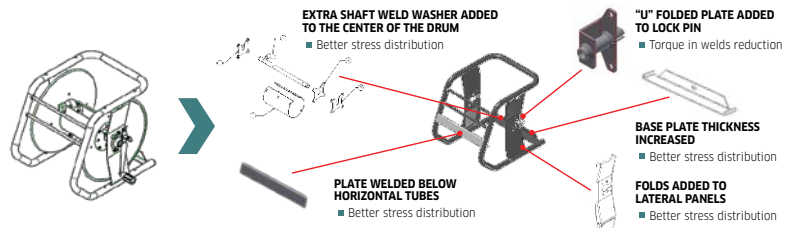
Universal 90° 45° Vertical

ORDER NO.	DESCRIPTION	LIST PRICE
8.919-430.0	Socket, Universal Mount	\$111.00
8.919-794.0	Socket, Skid Mount	\$146.00
8.919-437.0	Socket, Wall Mount	\$56.00
8.919-434.0	Socket, Base Mount	\$55.50
8.919-072.0	Bracket, Universal	\$81.00
8.919-445.0	Bracket, 90-Degree	\$34.90
8.919-441.0	Bracket, 45-Degree	\$36.20
8.919-448.0	Bracket, Vertical	\$36.20

READY-STACK HOSE REELS

Hose reels built specifically for contractors who require flexibility on a job site. Stackable reels are supported on both sides of the central hub to accommodate more aggressive applications, such as trailer-mounted.

- Reel and swivel rated up to 6000 PSI and 350°F
- Integrated frame adds protection and stacking ability
- Accommodates hose lengths of up to 100' or 200'
- Ideal for stacking on a trailer
- Heavy-duty powder-coated steel or stainless steel
- Modular design allows user to configure to meet various needs
- Reversible hand-crank and swivel



100' Mild Steel Ready-Stack Reel

200' Mild Steel Ready-Stack Reel

200' Stainless Steel Ready-Stack Reel



ORDER NO.	DESCRIPTION	LIST PRICE
9.801-771.0	100' Mild Steel Ready-Stack Reel	\$546.00
9.801-772.0	200' Mild Steel Ready-Stack Reel	\$593.00
8.923-415.0	Hose Guide, 100' Reel	\$132.00
8.923-427.0	Hose Guide, 200' Reel	\$146.00
8.923-416.0	Hose Reel Riser	\$220.00
8.923-918.0	Reel Cart System	\$217.00

Note: Hose not included



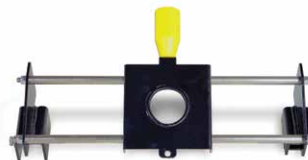
Configured:

- ✓ (1) 200' Mild Steel Stackable Hose Reel
- ✓ Optional Hose Guide
- ✓ Optional Hose Reel Riser



Configured:

- ✓ (2) 200' Mild Steel Stackable Hose Reels
- ✓ Optional Reel Cart System
- ✓ Optional Hose Guide



Hose Guide

Directs hose back onto reel for a more uniform fit



Hose Reel Riser



Reel Cart System

Easily transport multiple hoses and reels

G3 PUMPS**LX SERIES**

The LX series pump is the patriarch of the line, delivering enough volume and pressure for the beefiest of pressure washers.

- 7 Year Warranty
- Up to 10.4 GPM and 3625 PSI
- 10% lower RPM than comparable pumps
- Extra-heavy-duty crankshaft and bearings
- 10mm head bolts made of 12.9 class steel

ORDER NO.	MODEL NO.	GPM	PSI	RPM	SHAFT	LIST PRICE
8.920-589.0	LX9536-Right	9.5	3625	1740	25mm	\$1,750.00
8.920-590.0	LX9536-Left	9.5	3625	1740	25mm	\$1,750.00
8.920-591.0	LX1036-Right	10.4	3625	1740	25mm	\$1,750.00
8.920-592.0	LX1036-Left	10.4	3625	1740	25mm	\$1,750.00

**LT SERIES**

Landa's unique design that delivers the same performance as other pumps but at 10% lower RPM.

- 7 Year Warranty
- Up to 6 GPM and 4000 PSI
- 10% lower RPM than comparable pumps
- Unique snug-fit design for heavy-duty valves
- Durable ceramic plunger with mirror finish

ORDER NO.	MODEL NO.	GPM	PSI	RPM	SHAFT	LIST PRICE
8.921-710.0	LT4540-Right	4.5	4000	1360	25mm	\$1,235.00
8.921-711.0	LT4540-Left	4.5	4000	1360	25mm	\$1,235.00
8.921-712.0	LT6036-Right	6.0	3600	1450	25mm	\$1,235.00
8.921-713.0	LT6036-Left	6.0	3600	1450	25mm	\$1,235.00

**LM SERIES**

The LM series is a heavy-duty pump designed for a broad range of applications generally from 4 to 5 GPM and from 3000 to 3500 PSI.

- 7 Year Warranty
- Up to 5 GPM and 3500 PSI
- 10% lower RPM than comparable pumps
- Copper-plated plunger guide lined with low-friction, teflon bronze and lead bushing

ORDER NO.	MODEL NO.	GPM	PSI	RPM	SHAFT	LIST PRICE
8.751-166.0	LM3540-Right	3.5	4000	1850	24mm	\$927.00
8.751-167.0	LM4030-Right	4.0	3000	1000	24mm	\$954.00
8.751-168.0	LM4030-Left	4.0	3000	1000	24mm	\$980.00
8.751-169.0	LM4035-Right	4.8	3500	1500	24mm	\$955.00
8.751-170.0	LM4035-Left	4.8	3500	1500	24mm	\$972.00
8.751-171.0	LM5030-Right	5.0	3000	1550	24mm	\$986.00
8.751-173.0	LM6035-Right	5.6	3500	1740	24mm	\$1,040.00
8.751-174.0	LM6035-Left	5.6	3500	1740	24mm	\$1,025.00

**LS SERIES**

The LS series is designed specifically as a direct-drive pump for gas engines.

- 7 Year Warranty
- Up to 5 GPM and 4000 PSI
- Durable ceramic plunger with mirror finish
- Set screw for engine shaft

ORDER NO.	MODEL NO.	GPM	PSI	RPM	SHAFT	LIST PRICE
8.751-175.0	LS3040G.3	3.0	4000	3400	1" Hollow	\$854.00
8.751-176.0	LS3540G.3	3.5	4000	3400	1" Hollow	\$842.00
8.751-177.0	LS4040G.3	4.0	4000	3400	1" Hollow	\$764.00
8.921-713.0	LT6036-Left	6.0	3600	1450	25mm	\$1,235.00

G3 PUMPS



LF/LFP SERIES

Landa LF & LFP Series - Hollow shaft pumps for direct-drive electric units.

- 7 Year Warranty
- Up to 3.5 GPM and 3000 PSI
- Durable ceramic plunger with mirror finish
- Set screw for engine shaft

ORDER NO.	MODEL NO.	GPM	PSI	RPM	SHAFT	LIST PRICE
8.929-260.0	LFP2030S	2.1	3000	1725	5/8" Hollow	\$559.00
8.929-265.0	LFP2830S	2.8	3000	1725	5/8" Hollow	\$559.00



LB/LBP SERIES

Landa LB & LBP Series - Solid shaft pumps for belt-drive units.

- 7 Year Warranty
- Up to 4 GPM and up to 3000 PSI
- Durable ceramic plunger with mirror finish
- Set screw for engine shaft

ORDER NO.	MODEL NO.	GPM	PSI	RPM	SHAFT	LIST PRICE
8.929-262.0	LBP3030-Right	3.0	3000	1650	24mm	\$618.00
8.929-753.0	LBP3030-Left	3.0	3000	1650	24mm	\$781.00
8.929-261.0	LBP4025-Right	4.0	2500	1550	24mm	\$669.00



LP/LPP SERIES

Landa LP & LPP Series - Hollow shaft pumps for direct-drive gas units.

- 7 Year Warranty
- Up to 3 GPM and up to 3500 PSI
- Durable ceramic plunger with mirror finish
- Set screw for engine shaft

ORDER NO.	MODEL NO.	GPM	PSI	RPM	SHAFT	LIST PRICE
8.929-264.0	LPP2535G	2.5	3500	3400	3/4" Hollow	\$682.00



LP1/LPP1 SERIES

Landa LP1 LPP1 Series - Hollow shaft pumps for direct-drive gas units.

- 7 Year Warranty
- Up to 4 GPM and up to 3500 PSI
- Durable ceramic plunger with mirror finish
- Set screw for engine shaft

ORDER NO.	MODEL NO.	GPM	PSI	RPM	SHAFT	LIST PRICE
8.929-263.0	LPP3035G1	3.0	3500	3400	1" Hollow	\$682.00
8.929-811.0	LPP3535G1	3.5	3500	3400	1" Hollow	\$639.00
8.923-761.0	LP4035G1					\$1,105.00

READY PUMPS



Ready Pump assemblies are easy to install, less expensive than purchasing separate components, require less labor than assembling components, and eliminate the guesswork on selecting components to go with the pump.

- 7 Year Warranty
- Fully integrated pump setup includes a pump, unloader, thermal protector, bypass loop hose, garden hose inlet with filter, and quick connect coupler
- VRT unloader valve
- Available in direct and belt drive models

ORDER NO.	MODEL NO.	TYPE	GPM	PSI	RPM	SHAFT	UNLOADER	LIST PRICE
8.924-440.0	LP3035G	Direct	3.0	3500	3400	3/4" Hollow	VRT3	\$791.00
8.924-441.0	LP3535G1	Direct	3.5	3500	3400	1" Hollow	VRT3	\$791.00
8.924-443.0	LB3030R	Belt	3.0	3000	1650	24mm Solid	VRT3	\$835.00
8.924-445.0	LM3840R.3	Belt	3.8	4000	1740	24mm Solid	VRT3	\$1,030.00

G3 PUMP REPAIR KITS

Original factory direct repair kits. See kit selection chart on the following page. Individual parts also available.



1. Valve Kit



2. Seal Kit



3. Plunger Oil Seals



4. Seal Packing with Brass



5. Ceramic Plunger Kit

1. VALVE KITS

ORDER NO.	SIZE	PUMP/SERIES	LIST PRICE
8.754-859.0		LB, LF, LP, LP1	\$93.50
9.802-603.0		LM, LT, LS	\$82.50
8.753-824.0		LT	\$61.50
8.753-515.0		LX5450	\$208.00
8.753-349.0	22mm (6 Pack)	LX	\$55.50
8.717-589.0	28mm	LX	\$37.60
8.754-859.0		LBP, LFP, LLP, GPP	\$93.50

2. SEAL KITS

ORDER NO.	SIZE	PUMP/SERIES	LIST PRICE
8.754-860.0	14mm	LF, LP, LP1	\$110.00
8.725-358.0	15mm	LS	\$108.00
8.725-354.0		LE2020F, LE3525F, LD3030(H), LG	\$103.00
8.754-856.0	16mm	LB, LF	\$113.00
8.753-512.0	16mm	LX5450	\$73.00
8.725-360.0	18mm	LM4035	\$126.00
8.753-821.0	18mm	LT	\$99.50
8.725-362.0	20mm	LM5030	\$98.00
8.916-488.0	20mm	LT	\$123.00
8.916-487.0	22mm	LT5030	\$131.00
8.916-487.0	22mm	Kit, U-Seal	\$131.00
8.725-364.0	25mm	LX8030, LX1025	\$171.00
8.752-845.0	28mm	LX	\$130.00
8.759-015.0		LBP, LFP	\$113.00
8.759-031.0		LLP, GPP	\$113.00

3. PLUNGER OIL SEALS

ORDER NO.	PUMP/SERIES	LIST PRICE
8.752-835.0	LX1036.2	\$7.05
9.802-606.0	LB3030, LH, LT, LX	\$6.40
9.802-609.0	LM, LS	\$23.50
9.803-937.0	LB (except LB3030), LBP, LD, LE, LF, LFP, LG, LP, LPP	\$10.60

4. SEAL PACKING WITH BRASS

ORDER NO.	SIZE	PUMP/SERIES	LIST PRICE
8.758-083.0	14mm	LF, LP, LP1	\$217.00
8.758-087.0	15mm	LS, LM3540	\$193.00
8.725-355.0	15mm	LE2020F, LE3525F, LD3030H, LG	\$57.00
8.758-081.0	16mm	LB, LF Series	\$224.00
8.757-939.0	16mm	GX5450	\$166.00
8.758-085.0	18mm	LM4035H	\$192.00
8.758-061.0	18mm	LT	\$203.00
8.758-086.0	20mm	LM4030, LM5030	\$63.13
8.916-322.0	20mm	LT	\$79.00
8.757-937.0	22mm	LX	\$138.00
8.725-365.0	25mm	LX8030, LX1025	\$87.00
8.757-938.0	28mm	LX	\$198.00
9.802-616.0		LX5050	\$88.50
8.929-348.0		LBP, LFP	\$224.00
8.758-218.0		LLP, GPP	\$217.00

5. CERAMIC PLUNGER KITS*

ORDER NO.	SIZE	PUMP/SERIES	LIST PRICE
8.754-862.0	14mm	LF, LP, LP1	\$42.10
9.803-934.0	15mm	LE2020F, LE3525F, LD3030H, LD3030, LG	\$54.00
8.933-023.0	15mm	LS	\$46.50
8.754-858.0	16mm	LB, LF	\$45.50
8.753-514.0	16mm	LX5450	\$29.00
8.753-823.0	18mm	LT	\$39.60
8.751-237.0	18mm	LM4035, LX5050	\$74.00
8.751-238.0	20mm	LM4030, LM5030	\$77.00
8.752-839.0	22mm	LX	\$41.60
9.802-614.0	25mm	LX8030, LX1025	\$99.50
8.752-840.0	28mm	LX	\$44.20
8.754-858.0		LBP, LFP	\$45.50

*Includes bolt, washer, O-ring, teflon ring and ceramic plunger

SELECTION CHART: G3 PUMP REPAIR KITS

Use the selection chart below to find the correct repair kits for the specific Landa Pump Model.

PUMP MODEL	VALVES	SEAL KITS*	PACKING WITH BRASS	PLUNGER OIL SEALS	CERAMIC PLUNGER KIT
LB3030	8.754-859.0	8.754-856.0	8.758-081.0	9.803-937.0	8.754-858.0
LB3030R	8.754-859.0	8.754-856.0	8.758-081.0	9.803-937.0	8.754-858.0
LB4025	8.754-859.0	8.754-856.0	8.758-081.0	9.803-937.0	8.754-858.0
LBP3030R	8.754-859.0	8.759-015.0	8.929-348.0	9.803-937.0	8.754-858.0
LBP4025R	8.754-859.0	8.759-015.0	8.929-348.0	9.803-937.0	8.754-858.0
LD3025	9.803-936.0	8.725-356.0	8.725-357.0	9.803-937.0	9.803-935.0
LD3030	9.803-936.0	8.725-354.0	8.725-355.0	9.803-937.0	9.803-934.0
LD3030H	9.803-936.0	8.725-354.0	8.725-355.0	9.803-937.0	9.803-934.0
LD4020	9.803-936.0	8.725-356.0	8.725-357.0	9.803-937.0	9.803-935.0
LE2020F	9.803-936.0	8.725-354.0	8.725-355.0	9.803-937.0	9.803-934.0
LE2020S	9.803-936.0	8.725-356.0	8.725-357.0	9.803-937.0	9.803-935.0
LE2825F	9.803-936.0	8.725-354.0	8.725-355.0	9.803-937.0	9.803-934.0
LE2825S	9.803-936.0	8.725-356.0	8.725-357.0	9.803-937.0	9.803-935.0
LE3525F	9.803-936.0	8.725-354.0	8.725-355.0	9.803-937.0	9.803-934.0
LF2030F	8.754-859.0	8.754-860.0	8.758-083.0	9.803-937.0	8.754-862.0
LF2030S	8.754-859.0	8.754-856.0	8.758-081.0	9.803-937.0	8.754-858.0
LF2830F	8.754-859.0	8.754-860.0	8.758-083.0	9.803-937.0	8.754-862.0
LF2830S	8.754-859.0	8.754-856.0	8.758-081.0	9.803-937.0	8.754-858.0
LF3530F	8.754-859.0	8.754-860.0	8.758-083.0	9.803-937.0	8.754-862.0
LFP2030S	8.754-859.0	8.759-015.0	8.929-348.0	9.803-937.0	8.754-858.0
LFP2830S	8.754-859.0	8.759-015.0	8.929-348.0	9.803-937.0	8.754-858.0
LG2530G	9.803-936.0	8.725-354.0	8.725-355.0	9.803-937.0	9.803-934.0
LG3030G	9.803-936.0	8.725-354.0	8.725-355.0	9.803-937.0	9.803-934.0
LG3035G	9.803-936.0	8.725-354.0	8.725-355.0	9.803-937.0	9.803-934.0
LG3535G	9.803-936.0	8.725-354.0	8.725-355.0	9.803-937.0	9.803-934.0
LG4030G	9.803-936.0	8.725-354.0	8.725-355.0	9.803-937.0	9.803-934.0
LH5050	9.802-604.0	9.804-492.0	9.804-493.0	9.802-606.0	9.802-629.0
LM3540	9.802-603.0	8.725-358.0	8.758-087.0	9.802-609.0	8.933-023.0
LM3540R.3	9.802-603.0	8.725-358.0	8.758-087.0	9.802-609.0	8.933-023.0
LM3840R.3	9.802-603.0	8.725-358.0	8.758-087.0	9.802-609.0	8.933-023.0
LM4030	9.802-603.0	8.725-362.0	8.758-086.0	9.802-609.0	8.751-238.0
LM4035	9.802-603.0	8.725-360.0	8.758-085.0	9.802-609.0	8.751-237.0
LM4035H	9.802-603.0	8.725-360.0	8.758-085.0	9.802-609.0	8.751-237.0
LM5030	9.802-603.0	8.725-362.0	8.758-086.0	9.802-609.0	8.751-238.0
LM6035	9.802-603.0	8.725-360.0	8.758-085.0	9.802-609.0	8.751-237.0
LP2535G	8.754-859.0	8.754-860.0	8.758-083.0	9.803-937.0	8.754-862.0
LP3035G	8.754-859.0	8.754-860.0	8.758-083.0	9.803-937.0	8.754-862.0
LP3035G1	8.754-859.0	8.754-860.0	8.758-083.0	9.803-937.0	8.754-862.0
LP3535G1	8.754-859.0	8.754-860.0	8.758-083.0	9.803-937.0	8.754-862.0
LP4035G1	8.754-859.0	8.754-860.0	8.758-083.0	9.803-937.0	8.754-862.0
LPP2535G	8.754-859.0	8.759-031.0	8.758-218.0	9.803-937.0	8.754-862.0
LPP3035G1	8.754-859.0	8.759-031.0	8.758-218.0	9.803-937.0	8.754-862.0
LS3040G.3	9.80-2603.0	8.725-358.0	8.758-087.0	9.802-609.0	8.933-023.0
LS3540G.3	9.802-603.0	8.725-358.0	8.758-087.0	9.802-609.0	8.933-023.0
LS4040G.3	9.802-603.0	8.725-358.0	8.758-087.0	9.802-609.0	8.933-023.0
LS5030G.3	9.802-603.0	8.725-358.0	8.758-087.0	9.802-609.0	8.933-023.0
LT4035	9.802-603.0	8.916-488.0	8.916-322.0	9.802-606.0	9.802-607.0
LT4040	9.802-603.0	8.916-488.0	8.916-322.0	9.802-606.0	9.802-607.0
LT4540.2	8.753-824.0	8.753-821.0	8.758-061.0	9.802-606.0	8.753-823.0
LT5030	9.802-603.0	8.916-487.0	8.916-323.0	9.802-606.0	9.802-611.0
LT5030H	9.802-603.0	8.916-487.0	8.916-323.0	9.802-606.0	9.802-611.0
LT6035	9.802-603.0	8.916-488.0	8.916-322.0	9.802-606.0	9.802-607.0
LT6036.2	8.753-824.0	8.753-821.0	8.758-061.0	9.802-606.0	8.753-823.0
LX1025	9.802-608.0	8.725-364.0	8.725-365.0	9.802-606.0	9.802-614.0
LX1036.2	8.753-349.0	8.752-844.0	8.757-937.0	9.802-606.0	8.752-839.0
LX5050	9.802-604.0	9.802-615.0	9.802-616.0	9.802-606.0	9.802-629.0
LX5450	8.753-515.0	8.753-512.0	8.757-939.0	9.802-606.0	8.753-514.0
LX8030	9.802-608.0	8.725-364.0	8.725-365.0	9.802-606.0	9.802-614.0
LX9536.2	8.753-349.0	8.752-844.0	8.757-937.0	9.802-606.0	8.752-839.0

*When replacing V-seals, use Packing with Brass

PUMP TOOL KIT

A must for every service department. Save time using the right tool for the job. The Landa Pump Tool Kit can be purchased as a complete kit or individually.



ORDER NO.	DESCRIPTION	LIST PRICE
9.802-954.0	Landa Pump Tool Kit	\$407.00
8.756-590.0	Normal Maintenance Kit	\$391.00
8.756-717.0	Oil Seal Maintenance Kit	\$126.00

Individual Parts of Landa Pump Tool Kit

9.802-581.0	Oil Seal Inserter Piston for LT Plunger Rod	\$14.40
9.802-564.0	Oil Seal Inserter Bushing for LT Plunger Rod	\$11.90
9.802-580.0	Oil Seal Inserter Piston for LM Plunger Rod	\$12.20
9.802-563.0	Oil Seal Inserter Bushing for LM Plunger Rod	\$9.25
9.802-566.0	Oil Seal Inserter Bushing for LM Crankshaft	\$12.80
9.802-568.0	Piston Seal Extractor	\$59.50
9.802-572.0	U-Seal Inserter Piston for LT Manifold	\$25.10
9.802-578.0	U-Seal Inserter Bushing for LT Manifold	\$13.20
9.802-573.0	U-Seal Inserter Piston for LM Manifold	\$25.10
9.802-579.0	U-Seal Inserter Bushing for LM Manifold	\$14.20

PUMP OIL

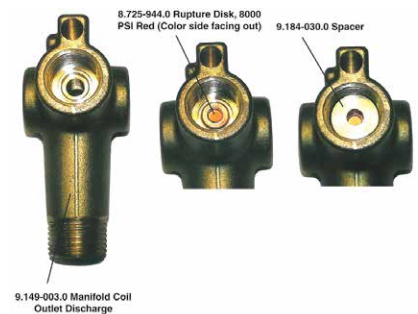
Premium 10W-40 multi-grade pump oil specially formulated, exclusively designed, tested, and proven to maximize the life and exceed the factory specifications for Landa, Admiral, AR, Interpump, General and other high-pressure pumps.



ORDER NO.	DESCRIPTION	LIST PRICE
8.923-424.0	32 oz Landa Pump Oil	\$14.90

DISCHARGE MANIFOLD / RUPTURE DISK

- Prevents dangerous thermal expansion of water in the coil
- Ensures operator safety



ORDER NO.	DESCRIPTION	LIST PRICE
9.149-003.0	Coil Outlet Discharge Manifold	\$24.30
8.725-944.0	Rupture Disk, 8000 PSI, Red	\$6.90
9.151-014.0	Rupture Disk, 5000 PSI, Blue	\$4.65
9.184-030.0	Rupture Disk Spacer	\$5.80

FUEL FILTER, WATER SEPARATOR

- Removes water from fuel
- Replace elements without tools
- 10 micron element
- 1/4" FPT inlet and outlet
- Filters gasoline and diesel fuel



ORDER NO.	DESCRIPTION	LIST PRICE
8.709-158.0	Filter, Fuel/Water Separator	\$108.75
8.709-161.0	Replacement Element	\$39.25
8.700-553.0	Kit, O-Rings, Drain Plug, Cup	\$60.00
8.700-554.0	Plug, Vent, Plastic	\$19.90

ADJUSTABLE THERMOSTAT SWITCHES FOR DISCHARGE MANIFOLD

- For use with Landa discharge manifold
- Capillary tube provides fast response time
- Prevents burner from overheating
- Two models adjustable to 240°F or 302°F



ORDER NO.	DESCRIPTION	LIST PRICE
8.750-094.0	150°C/302°F, 2 meter capillary	\$29.00
8.750-095.0	120°C/240°F, 2 meter capillary	\$30.40

FUEL CAPS



9.802-089.0



9.802-082.0

ORDER NO.	DESCRIPTION	LIST PRICE
9.802-089.0	Threaded Cap (Fits All Poly Fuel Tanks)	\$7.80
9.802-082.0	Plastic, Twist Lock, PHW Metal Tanks	\$31.00

ADJUSTABLE THERMOSTAT SWITCHES

- Capillary tube provides fast response time
- Prevents burner from overheating
- Adjustable to 300°F



ORDER NO.	DESCRIPTION	LIST PRICE
9.802-285.0	300°	\$68.00

FUEL TANKS

- International color coded for gas (red) and diesel (green)
- Rugged fill neck cap with vent
- Semi transparent shows fuel level
- Heavy-duty 14 gauge



ORDER NO.	DESCRIPTION	LIST PRICE
8.931-758.0	10 gal Poly, Yellow	\$292.00
8.706-626.0	6 gal Poly, Yellow, VHW/MVP/MVC	\$148.00

Note: Cap not included with tank

FLOAT TANK

- 3.5 gallon capacity
- 22" x 13-1/2" x 5"
- Heavy 3/16" durable plastic
- Convenient mounting tabs
- Complete assemblies available, call with model number



ORDER NO.	DESCRIPTION	LIST PRICE
8.933-046.0	Float Tank Assy, w/Dual Floats	\$258.94
8.933-048.0	Oil Skimmer/Float Tank Assy	\$261.08
8.933-049.0	Float tank, SEASS Cab	\$258.94
8.912-233.0	Lid & Hinges	\$71.00

HEATING COILS

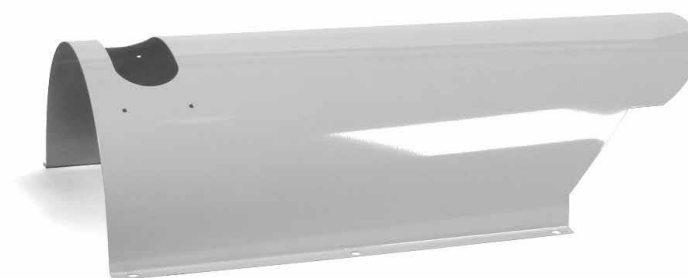
- Cold-rolled pipe, no weak points from heating to make bends
- Heavy-duty schedule 80 carbon steel pipe
- "Aluminized steel" wrapper
- Best warranty in the industry



ORDER NO.	DESCRIPTION	LIST PRICE
8.925-216.0	DuraCoil 20" Dia, Sch 80, with Aluminized Steel Wrap, Horizontal	\$1,275.00
9.803-134.0	DuraCoil 14.5" Dia, Sch 80, MVC, VHP	\$1,010.00
8.914-962.0	DuraCoil 14.5" Dia, Sch 80, MHC, HOT	\$1,245.00
9.803-135.0	VNG-S after 4/99, new style, 18" dia., ENG, VNG, NG, VHG	\$1,525.00
8.912-247.0	DuraCoil, VNG, Large, after 3/97, new style ENG, VNG, NG	\$3,585.00
8.912-241.0	VNG-S, 16" (5/89-3/99) Except 8-2500, 6-3000, old style	\$1,430.00
8.912-240.0	VNG-S Except 8-2500, 6-3000, old style pre 5/89	\$1,555.00
8.912-248.0	DuraCoil, 6-3,8-3 VNG/VHG for modulating thermo	\$3,750.00
8.718-911.0	Coil Clean Chemical, 8#	\$100.00

COIL WRAPS

- Cold-rolled pipe, no weak points from heating to make bends
- Heavy-duty schedule 80 carbon steel pipe
- "Aluminized steel" wrapper
- Best warranty in the industry



8.912-187.0



9.803-027.0

ORDER NO.	DESCRIPTION	LIST PRICE
8.912-192.0	Top, Stainless Steel, PHW	\$390.00
8.914-969.0	Top, Stainless Steel, MHC, HOT	\$631.00
8.916-486.0	Bottom, Wrinkle Black, PHW	\$367.00
8.914-946.0	Bottom, Wrinkle Black, MHC, HOT	\$351.00
8.912-866.0	Outer, MVC	\$243.00
9.803-027.0	Outer, Stainless, MVC	\$350.00

COIL INSULATION

- Refractory grade ceramic
- Retains heat inside coil for better fuel efficiency and paint protection



9.802-833.0 9.802-894.0 8.717-396.0 9.802-900.0 9.802-901.0 9.802-902.0

ORDER NO.	DESCRIPTION	LIST PRICE
9.802-883.0	Front Head, No Hole	\$28.30
8.735-002.0	Front Head, No Hole, 16"	\$31.80
9.802-894.0	Burner Head, with Hole	\$47.60
8.731-284.0	Burner Head, with Hole, 16"	\$33.40
8.933-009.0	Gasket, Burner Plate	\$2.00
8.717-424.0	Gasket, Skid Stackless Top	\$11.40
8.717-425.0	Gasket, Stackless Adapter	\$12.20
9.802-900.0	Tank Bottom, 1" Blanket, VHW, VHP	\$22.70
9.802-901.0	Tank Head 16" OD x 8" ID, VHW, VHP	\$49.80
8.717-396.0	Disk, Flash Pan, GTO (2 req)	\$24.70
8.717-410.0	Blanket, with Foil sqft (10 sqft req)	\$17.30
9.802-896.0	Blanket-No Foil, 24" x 57", Horizontal	\$73.00
9.802-902.0	Blanket-Die Cut, 28" x 24", Horizontal	\$38.00
8.717-433.0	Blanket-Die Cut, 33" x 89" (VNG)	\$264.00
8.750-917.0	Blanket, 1/2" x 26" x 60"	\$123.00

UNLOADER VALVES

- PA VB8 - 8 GPM, 3650 Max PSI
- VBXL - 13 GPM, 3000 Max PSI
- VBA35 - 6.6 GPM, 3500 Max PSI
- VR54 - 8 GPM, 2175 Max PSI
- VB56 - 8 GPM, 3650 Max PSI



ORDER NO.	DESCRIPTION	LIST PRICE
9.802-362.0	PA VB8 with switch (N/C) for PHW	\$191.00
9.803-899.0	VBA35 for Landa LG, LD and LE pumps	\$152.00
8.715-508.0	VBXL 13 GPM @ 3000 PSI with Knob	\$192.00
8.753-028.0	VR54 for Landa LD and LE pumps	\$79.50
9.803-900.0	VBA35 for Landa LM and LS pumps	\$178.00
8.715-502.0	HM DX Unset (921462)	\$159.00

FLOW SWITCH

- Horizontal or vertical mount
- 4350 PSI
- 8 GPM max flow, 1.8 GPM min flow
- 180°F
- 12-250V, .8 amps
- 3/8" FPT inlet/outlet
- 2 wire reed



ORDER NO.	DESCRIPTION	LIST PRICE
8.933-006.0	Landa MV60, Versatile Mount	\$95.00
8.712-244.0	Vertical Mount Only	\$88.50
9.803-266.0	Replacement Reed Switch	\$50.50

2.5" PRESSURE GAUGE

- PSI: 0 - 5000
- Stainless Steel
- Bottom Mount



ORDER NO.	DESCRIPTION	LIST PRICE
9.114-439.0	Landa 2.5" Pressure Gauge	\$35.10

FLUE ADAPTERS

- Used to vent exhaust from horizontal hot water machines
- Hot dipped galvanized
- Adapts to standard stove pipe



ORDER NO.	DESCRIPTION	LIST PRICE
8.903-430.0	8" without Stack, new style kit	\$245.00
8.717-745.0	8" without Stack, new style	\$227.00
8.750-310.0	8" without Stack, HOT, MHC	\$223.00
8.717-769.0	10" without Stack, SLT/SLX	\$267.00
8.903-429.0	10" SLT Models	\$387.00

*Includes insulation and mounting hardware



WAYNE BURNERS FOR LANDA PRESSURE WASHERS

Since 1928, Wayne Combustion has built a reputation for reliable, ultra-high efficiency burners that deliver lower emissions, improved efficiency, and a controlled flame pattern, thanks to features like positive flame retention, low nozzle temperatures, and high static pressure for optimal air/oil mixture.



ORDER NO.	DESCRIPTION	OPERATING VOLTAGE	AIR CONE SIZE	FUEL PUMP VOLTAGE	LIST PRICE
8.756-091.0	Burner, MSR 3.75 120V 3T 120V S	120v	#5A	120v	\$1,070.00
8.756-177.0	Burner, EHASR 3.00 230V 1T 120V S	230v	#8A	120v	\$1,230.00
8.756-178.0	Burner, EHASR 3.00 120V 1T 120V S	120v	#8A	120v	\$1,260.00
8.756-335.0	Burner, EHASR 120V 2T 24V S	120v	#8A	24v	\$1,210.00
8.756-336.0	Burner, EHASR 230V 2T 24V S	230v	#8A	24v	\$1,490.00
8.756-383.0	Burner, EHASR 120VAC 2T 24V S	120v	#4A	24v	\$1,370.00
8.756-384.0	Burner, EHASR 230VAC 2T 24V S	230v	#4A	24v	\$1,430.00
8.756-412.0	Burner, MSR 13.5VDC 2T 12VDC S	13.5vDC	#4A8	12vDC	\$1,310.00
8.756-413.0	Burner, EHASR 120V 2T 120V S	120v	#4A	120v	\$1,460.00
8.756-435.0	Burner, EHASR 120V 2T 120V S	120v	#7A	120v	\$1,375.00
8.756-480.0	Burner, EHASR 12VDC DO 2T 12VDC S	12vDC	#4A	12vDC	\$1,655.00
8.756-644.0	Burner, MSR 120V 2T 24V S	120v	#8A	24v	\$1,110.00
8.756-923.0	Burner, EH 1.75 120V 2T 120V S	120v	3.56" ID Flamelock	120v	\$1,475.00

WAYNE BURNER CHART

WAYNE BURNER PART #	DESCRIPTION MOTOR / COIL	FUEL PUMP	IGNITOR	BURNER MOTOR	BURNER FAN	COUPLING
8.756-091.0	Burner, MSR 3.75 120V 3T 120V S	8.756-290.0	8.700-803.0	8.756-292.0	8.700-726.0	8.700-822.0
8.756-177.0	Burner, EHASR 3.00 230V 1T 120V S	8.756-290.0	8.756-291.0	8.756-294.0	8.700-730.0	8.750-543.0
8.756-178.0	Burner, EHASR 3.00 120V 1T 120V S	8.756-290.0	8.700-802.0	8.756-293.0	8.700-730.0	8.750-543.0
8.756-335.0	Burner, EHASR 120V 2T 24V S	8.756-437.0	8.700-802.0	8.756-293.0	8.700-730.0	8.750-543.0
8.756-336.0	Burner, EHASR 230V 2T 24V S	8.756-437.0	8.756-291.0	8.756-294.0	8.700-730.0	8.750-543.0
8.756-383.0	Burner, EHASR 120VAC 2T 24V S	8.756-437.0	8.700-802.0	8.756-436.0	8.756-438.0	8.750-543.0
8.756-384.0	Burner, EHASR 230VAC 2T 24V S	8.756-437.0	8.756-291.0	8.700-745.0	8.756-438.0	8.750-543.0
8.756-412.0	Burner, MSR 13.5VDC 2T 12VDC S	8.756-437.0	9.107-507.0	8.700-739.0	8.756-660.0	8.700-721.0
8.756-413.0	Burner, EHASR 120V 2T 120V S	8.754-707.0	8.700-802.0	8.756-436.0	8.756-438.0	8.750-543.0
8.756-435.0	Burner, EHASR 120V 2T 120V S	8.756-290.0	8.700-802.0	8.756-293.0	8.700-730.0	8.750-543.0
8.756-480.0	Burner, EHASR 12VDC DO 2T 12VDC S	8.756-437.0	9.107-507.0	8.757-632.0	8.756-726.0	8.756-715.0
8.756-644.0	Burner, MSR 120V 2T 24V S	8.756-437.0	8.700-803.0	8.756-292.0	8.700-728.0	8.700-822.0
8.756-923.0	Burner, EH 1.75 120V 2T 120V S	8.717-814.0	8.700-802.0	8.756-436.0	8.756-438.0	8.750-543.0



A series of 25 horizontal lines spaced evenly down the page, intended for taking notes.

**LARRY LINTON
LEADERSHIP AWARD**

2023 Winner: Matt Tweedy
AMB Tools & Equipment



**CONNECT
WITH US**

Follow us on your favorite channels to stay in the loop and share updates with the Landa community.



OUR COMMITMENT TO SAFETY

Buy with confidence knowing your Landa pressure washer is engineered with safety in mind. All Landa pressure washers are tested by a Nationally Recognized Testing Laboratory (NRTL) accredited by the Occupational Safety and Health Administration (OSHA). Using a set of standards to test for technical competence, Landa has been certified by ETL (Intertek) meeting UL (Underwriters Laboratories) and CSA (Canadian Standard Association) safety requirements.*

These labs adhere to a uniform set of U.S. standards and codes, guaranteeing consistent and unbiased evaluations of technical competence, integrity, and safety. Learn more about Landa safety components and operator best practices at landa.com.

*UL 1776 High-Pressure Cleaning Machines, CSA B140.11 Oil Gas-Fired Commercial/Industrial Pressure Washers and Steam Cleaners, and/or CSA C22.2#68 Motor-Operated Appliances.

CERTIFICATIONS

Certified Performance: Landa pressure washers undergo rigorous testing by labs accredited by the Cleaning Equipment Trade Association (CETA), ensuring that the specifications we advertise (PSI, GPM, etc.) are accurate and reliable.

ETL® Certified: Landa equipment proudly meets ETL standards, providing you with an extra layer of confidence in the safety and performance of our products. This certification also ensures a fair comparison when evaluating different pressure washer brands.

Quality and Environmental Management: Our manufacturing facilities have established and apply a Quality and Environmental Management System to be ISO 9001:2008 and ISO 14001:2004 certified.



(877) LANDA-DLR
(877) 526-3235



orders@landa.com
Email Customer Care



infonet.karcher.com/us
Order on Infonet

LANDA®

Prices, specifications, and product descriptions subject to change without notice.
LAN_2025 Price List ©2025 Rev. 01/25